

Lenten Masses Daily
 Mon.-Fri. 6:30, and 11:55 a.m.
 Tues. and Thurs. 5:00 p.m.
 Sat. 7:30 and 11:30 a.m.
 Sun. 8:15 and 11:30 a.m.

ANGELICUS

See Student Council
 Editorial, Page 2

Vol. XXVI No. 8

BARRY COLLEGE, MIAMI, FLORIDA

February 11, 1967

Officers Comment On SC Proposed Constitution

When an organization of long standing is suddenly dissolved and replaced by a totally new structure, how do its leaders react?

Student Council officials, vigorously involved in proposing and drafting a new constitution, were seeking just such an answer from the Social Board and Kappa Rho.

Enforces Policy

"I think it's a great idea!" began Linda Wolfe, campus queen and head of the Social Board, in reference to the social board's incorporation into a student senate. Emphasizing the problems of lack of communication, Linda feels that the proposed senate plan would clarify and enforce policies now held by the Social Board.

"Under the present organization, if the class representative happens to miss a meeting, her class just doesn't receive our messages that month," Linda ex-

'Crucible' Fund To Aid Hospital For Children

Three enterprising Barry nursing students have answered the Variety Children's Hospital plea for funds, by asking that the proceeds from a performance of *The Crucible* be contributed to the "Operation Survival".

Liz Carter, Gretchen Worden, and Jean Bucknam have contacted Sister Marie Carol, head of the Speech and Drama Department, and she has arranged for the proceeds of Saturday's performance to be donated to the fund.

Their performances for *The Crucible* are Wednesday, Feb. 22 at 8:15 p.m., Thursday, Feb. 23 at 8:15 p.m., Friday, Feb. 24 at 8:15 p.m. and Saturday afternoon at 2:30 p.m.

The play itself, is Arthur Miller's drama of Salem witchcraft, in a puritanical setting filled with ironic twists of injustice. The play resembles Hawthorne's *Scarlet Letter*, but with more modern aspects, involving voodoo, and witchcraft trials, rather than concentrating on adultery.

(Continued on Page 3)

Seniors Control Dean's List

Seniors represented over 40% of the total number of students listed on the Dean's List for the first semester.

Students holding semester averages of 3.3 or above were named this week.

The large senior court is attributed to the many students who were working in internships under a 6-credit course and whose performance was highly evaluated.

The List named 49 seniors, 30 juniors, 21 sophomores and 19 freshmen. These students are as follows:

SENIORS

D. Alvarez, E. Baez, M. E. Barnard, C. Barrett, J. Bayles, B. Brandes, C. Cardone, F. Cavari, E. Clancy, C. Cordero, I. L. Curran, G. Dalton, N. Davis, S. Denison, K. Demeritt, R. Dominguez,

(Continued on Page 4)



Phyllis Triarsi, sophomore, is Barry's nominee for Glamour's ten best dressed college girls. Through state and regional competition, contestants will be eliminated for the ten top winners receiving a trip to New York and a scholarship.

plained. She added that the Social Board should know what the other organizations are doing for mutual communication and correlation.

To her the senate chairman of the Committee on Social and Cultural Activities is a mere renaming process, yet with this new committee, the student body will have greater representation.

Rather than a small group of students making the decisions, the Committee on Social and Cultural Affairs will be composed of senators and representatives offering a wider view of campus opinion.

Effective SB

With more centralization and consequent communication, Linda feels that the purpose of the "Social Board" will be more effective to the student.

From Noreen Bevilacqua, president of Kappa Rho, came a similar reaction to the dissolution of her organization and its incorporation into the new student senate plan.

With nearly twenty members plus moderators, Kappa Rho almost rivals the student council, and therefore, functions independently of the present council; however, the Student Affairs Committee which would dissolve Kappa Rho, would function within the student senate framework.

Central Guide

At present Kappa Rho, has its own constitution, which does not necessarily coincide with that of the Student Council, but with the new plan, the senate would be a central guide to all the committees.

Noreen hinted that each dorm might develop a house council to handle problems relative to

(Continued on Page 3)

Sweden's Bishop Reviews Religion

An American bishop, who is the pastoral head of Sweden's 30,000 Catholics, will address the Coleman F. Carroll Lecture Series Tuesday, February 14, at 8:15 in the Barry auditorium.

Bishop John E. Taylor O.M.I., (Oblate of Mary Immaculate), will speak on "Sweden and Religion."

Bishop Taylor was appointed bishop of Stockholm, Sweden by the late Pope John XXIII in 1962. Prior to his elevation, Bishop Taylor served as superior in both major and minor seminaries in the United States and founded missions in Denmark and Greenland.

Retreat Promises Student Involvement

A weekend of student involvement discussions on faith, liturgy and love, will mark a new approach to the annual student retreat, February 17, 18 and 19.

The freshman-sophomore retreat master, Father Kiernan Fergus, O.P., of the Aquinas Center at the University of Miami, has met with student representatives to organize a retreat that promises to be meaningful to everyone.

Darlene Kali, sodality prefect, who has worked closely with Father Fergus, has high

hopes for its outcome. She said the plans call for "an outstanding dialogue about important issues that effect us as college women."

Religious Song Fest

One innovation is a planned song fest featuring religious folk tunes, Friday night. To emphasize student involvement the songs sung during Mass will be chosen by upperclassmen and the Prayer of the Faithful will be written in accordance with the student's interests and intentions.

Even the conference will have a new tempo with the introduction of dialogue after the master's address allowing each girl the opportunity to ask her own questions, hopefully for the benefit of all.

Informal Meetings

Saturday afternoon, following the conference, an informal discussion will be held in Florida Gardens and Saturday evening a Collegiate Scripture Dialogue will take place in both Regina Mundi lobby and Stella Matutina social hall. The last conference will be given Sunday at the 10:30 Mass.

Sophs and Frosh Celebrate Traditional Class Days

Come February 21, a new tree will appear on the Barry campus. The tree will be planted by the Freshmen class as part of their class day activities.

The tree is a symbol of each girl's constant growth during her four years at Barry, as well as her continuing growth in the future.

Dressed in academic attire the entire student body and the faculty will attend. The chaplain blesses the tree and addresses the group. Each class president congratulates the freshmen and welcomes them into the Barry family.

Following the blessing, the freshmen class officers place a shovel of earth on the tree. The ceremony is concluded with the traditional tree planting song and the Alma Mater.

In the evening the freshmen will greet the resident student body and the faculty at their first class day dinner. A cocktail party will precede the dinner. Decorated to an international theme, the dinner will be concluded with a program of class parodies and songs.

Throughout the day the upperclassmen will honor the freshmen by wearing their class colors of yellow and blue.

"Here we come in pink and wine, we're the class of '69' . . . Remember that?"

You'll be seeing a lot of 'pink and wine' when the Sophomore Class holds their class day, Feb. 14.

Ginger Calvano, sophomore sociology major and class social chairman, is in charge of the day's activities.

Kathy Sweeney, sophomore home-economics major is in charge of the cocktail party to be held in the Canteen at 5 p.m.

Following this, the sophomores will escort their sister classes up to the dining room decorated and "transformed" by Doris Wolf, Art major, and co-workers. There the class of '69 will play hostess to faculty and students at their annual class dinner.

To officially end 'class day', sister classes will stand up and sing praises of one another in song. Sheri Del Pra, Physical Education major, is in charge of preparing the songs the sophomores will present.



Fergus

Bowman

Father Fergus is a native New Yorker, graduated from St. Francis College, Brooklyn, with a B.A. in Business Administration. He received his M.S. in Philosophy from St. Stephen's College in Dover, Massachusetts and after obtaining a Licentiate in Sacred Theology from Immaculate Conception in Washington, D.C. he was ordained in June of 1965.

Father Bowman, S.J.

Father David Bowman S.J. from the department of Faith and Order of the National Council of Churches in New York is the retreat master for the juniors and seniors. Receiving his A.B. and M.A. in the Classics at Loyola University, Chicago and his Doctorate in Sacred Theology from Georgian University, Rome, Father Bowman has taught at various Catholic schools throughout the United States. He specializes in the theology of the Redemptive Incarnation and is author of the college textbook, *The Word Made Flesh*.

Ecumenical Movement

Involved for years in the ecumenical movement in the D.C. and Chicago areas Father Bowman is the first Roman Catholic to be employed as a staff member of the Faith and Order Department of the National Council of Churches.

European Tour Set for Summer

A 21-day European summer tour is being planned for Barry students who are interested in the cultural history of Europe.

Leaving New York around July 28, the group will fly to Paris for a 2-day visit. The tour will include Lourdes, Rome, Munich, and London, and cities in Scotland and Ireland as well.

Faculty Coordinator

Sister Elizabeth Ann, O. P. is the faculty coordinator for the tour and is making all arrangements with the Lorraine Travel Agency which planned trips for Sister Robert Louise and Sister Marie Carol.

The itinerary includes arrangements for the students to attend plays at the Abbey Players in Dublin, operas and festivals at the Salsburg Festival in Austria.

Brochures will be distributed at a later date, but interested students may contact Sister Elizabeth Ann in her second floor office in Thompson Hall.

Hartmus Receives Home Ec Scholarship



Michele Hartmus, a sophomore home economics-education major has been awarded a \$300 scholarship from the Florida Home Economics Association.

Sr. Eulalia, head of the home economics department and a member of this association, was influential in initiating this program for home economics students.

The Yap about Gaps . . .

LSD, the pill and wierdo campus activities may soon lose their popular terminology to a new phrase that's stealing the spotlight in student conferences and popular magazines. It's called "gaposis" — the people gap.

The main symptoms of the gap is a lack of communications between the over-30 and under-30 generations.

In Washington, D. C. last week, it was debatable among college editors whether there was a gap at all. Still, some managed to develop a dictionary of gap-terms that might describe what is disturbing the campus generation.

1. The sensitivity gap: feelings that differ between over-30 and under-30 generations.
2. the relevance gap: college flunks in its effort to bring the student up to facing the real, real future.
3. the knowledge cataclysm: the fast moving world of changes outraces the student's power to absorb its information.
4. the communications gap: "You just don't understand what I mean."
5. the subculture gap: discovering the beauty of life with the powers of the intellect as opposed to sensations created by the hippy drug scenes.



Walter Lippman

Walter Lippman, noted political columnist, told the editors that gaps are the result of "fast change in events." Nothing remains the same for too long. He acknowledged another "gap" — technological. When men grow old, he added, they see the world as it was and not with the latest innovations.

Gap or no gap, college temperaments deny the existence or need for compromise which, in effect, causes gaps. Of the 700 editors at the conference, a loud and strong minority claims their generation is either "for" or against it; they prefer birth control, and they are against the be against Vietnam not for it; they prefer to be for LSD not against it; they prefer birth control, and they are against the draft. Their contrariness is a strong one, and their self-centered blindness forces them to prefer the contrary of moral judgment for the sake of preserving their "image."

Their image is "the new student left." They identify themselves as a minority group with the right answers. They ask "what generation was ever characterized by its majority?" They were told by Walt Rostow, economist and government official, that they did not represent their own generation because too many others were willing to fight in Vietnam for the freedom their counterparts were squandering. John Roche, special consultant to President Johnson, chided them for their fuzzy objections to the Vietnam situation and added: "For God's sake go home and do your homework."

But the minority group, small as it may seem, is a loud one, and these students are being heard, too much, too frequently. The Washington Post gave them front page coverage the following day, headlining their denial of labels and assertion of differences. A current issue of LOOK magazine writes about the generation gap and presents the world as seen thru double vision.

Barry college revisited is not with the gap generation. There is little "for" or "against" here. Our diminutive campus society is all the way — one way, not because we accept the Truth that is taught, but basically because we just don't realize where the Truth lies in controversies that exist in that world beyond our gates and the Florida state line.

The Framers, the Framed

A crash course in constitutional history should be mandatory for every Barryite who is under the impression that the favored "B Plan" for revision of the student constitution parallels the structure of the legislative branch of the Congress of the United States.

The plan calls for three class senators, and requests four representatives for each of the five standing committees. In our present national system, voters elect two senators from their state and a proportionate amount of representatives. The "B Plan" proposes that each class be equally represented with the exact amount of representatives.

In other words, the senior class with 100 members would have just as much power representation as the freshman class with, say, 250 members. On our national level, heavily populated states carry a louder representative voice in the House. If our constitution aims to copy the Congress, it may well happen that the loudest voice in our representative system will come from the youngest members on campus.

It might behoove our constitution framers to consider who is eligible to vote for their representatives. If one must be a bonafide American citizen, age 21 and paying his taxes before exercising his voting rights, than what will constitute voting rights on the Barry campus? We suggest that the bonafide Barry citizen is one who pays her class dues, and that the number of paying collegiates will determine the number of representatives in our government.

Views and Reviews

Graduate Delights Ballet Audience

A sell-out house enthusiastically received the National Ballet, resident company of the Nation's Capital, Feb. 5 in the Barry Auditorium.

This fine company under the direction of Frederic Franklin presented a varied program from modern classical to dignified romantic light comedy. And best of all, they presented a Barry girl who made good.

In *Le Pas De Quatre*, Judith Reece, '64, was featured with three other ballerinas in a romantic ballet first performed in 1845. The third offering, *Danse Brillante*, displayed the superb talent of premier danseur, Ivan Nagy, and two brilliant ballerinas, Judith Helman and Anita Dyche.

Con Amore, the final ballet, presented against a colorful backdrop, was a light comic treatment of the trials encountered by mortals in pursuit of love, solved finally by the entrance of Cupid.

The audience responded warmly to each number, but it was obvious that Judy Reece was their favorite. Their enthusiastic applause was well deserved. This young woman is as delightful a person as she is a lovely dancer.

Judy has danced since she was four, beginning her serious study at age eleven. After two years of study with George Balanchine in New York, Judy returned to Barry to complete her education and was graduated in 1964. She was then asked to join the year old National Ballet Company in Washington, D. C.

Judy finds her life physically, mentally and emotionally demanding, but feels that performing compensates for these demands. When the company is in Washington, they spend one and a half hours in class and five hours in rehearsal. During



JUDY REECE

performance days and while on tour the class time is cut to an hour and rehearsal time to two hours.

The company travels mainly in the United States, but has danced in Mexico and is planning a European tour next year.

Judy, an honor student, is studying for her master's degree in theatre arts during the summer at Catholic University. Her ambition is to teach dance in college, modern ballet and movement for actors.

The silent question arises: Are we too quick to accept "B Plan" without looking into some other possibilities? Right now it's the case of the blind leading the blind because only a few evidently are aware of the advantages and disadvantages of the two originally proposed plans. From an obviously unsuccessful present constitution, the big swing is now toward a supposedly successful new constitution with little thought-provoking questions being asked.

We submit:

1. Cannot the student body at large be given some time to study the entire proposed "B Plan" before they are hit with it hastily at the March constitutional assembly?
2. Only the framers of the new constitution know the proposed details of the "A Plan." This leaves the student body in the dark as to the advantages and disadvantages of both plans. Does there not exist a possible compromise between the two? The student body will know only one in the end.
3. How much, to what extent, with whose permission or tolerance does student authority over students exist in the "B Plan?" When the executive branch of the new structured constitution makes a decision in any case, where does it go from there? Will the executive branch have power of decision, or just recommendation? It is folly to think they will be able to do whatever they please in any case, but it is intelligent to clarify what their jurisdiction will encompass.

It is hoped that the student body will be granted the right to be informed on the pros and cons of both plans so that they may exercise their right to determine what will be to the benefit of the general welfare.

Among Ourselves

by Giustina Misuraca

Last week I attended a college editors convention in Washington where the radicals of our generation glowed in the spotlight of TV camera lights. Their words that supposedly represented the thinking of our generation were cited in papers such as the Washington Post. I noted that a few did all the talking and the majority of conferees were quiet like myself.

This was the first time that I had ever encountered the so-called radicals or new left wing of the campus who were so actively involved in the issues of today: Vietnam, foreign policy, birth control pills, dope, and so on. Names of far-distant universities such as California and Boston University became people who were vitally interested in an issue and saying plenty about it.

Before this encounter, I could sit back in my smug world and forget that these situations existed or just say that those kids don't know what they're talking about.

The convention over, I was flying back to Miami with one thought uppermost in my mind: right or wrong, these students knew something about world affairs and social problems. I knew little.

I looked out my window of National's Electra. It was a beautiful and clear night, far clearer than the muddled thoughts in my head provoked by so many issues brought up in Washington.

I promised myself to read, read, read. Not only that, but to analyze what I read.

When we drove in the gate to the campus, I took one hard look. It was peaceful, undisturbed, secure in its foundation in teaching the truth. I wondered if it was at all aware of the noise outside.

I continued to wonder what the outcome will be of the special meeting of the California college editors.

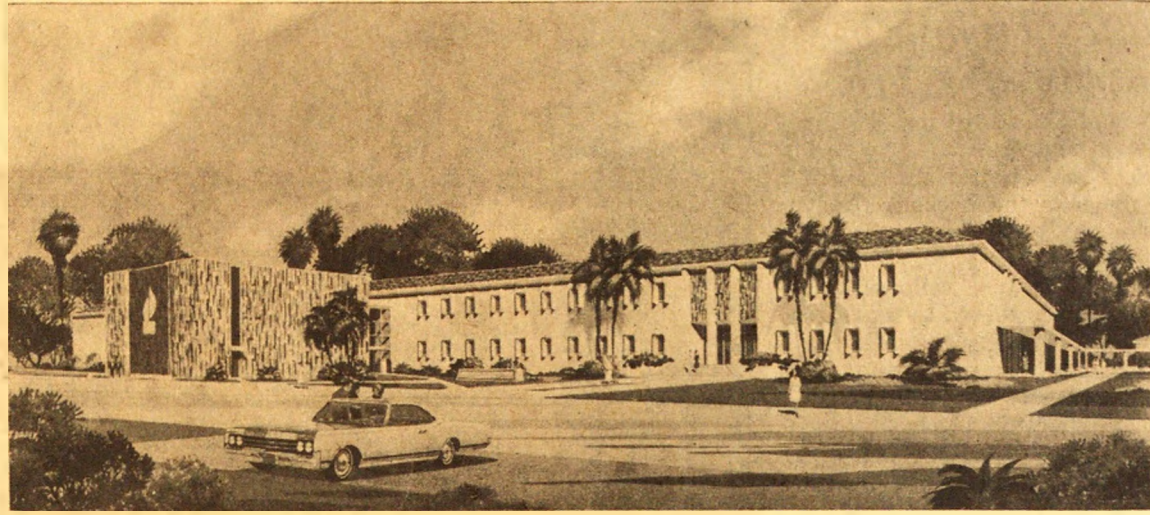
Published every other week by the students of

BARRY COLLEGE
Miami, Florida

Address all inquiries to
Editor, Box 36 Barry College
Miami, Florida 33161

Membership in the
Associated Collegiate Press

Editor Adrienne Moore
Business Manager Mary Catherine Ungar
Assistant Manager Mary Cathryn Miller
Managing Editor Giustina Misuraca
Photographer Linda Hill
Artist Rita Dominguez
Circulation Sheri Dal Pra
Assistant Manager Olivia Bevilacqua
Copyreader Linda Meyer



While construction crews dig bigger holes opposite the Chapel, architects have visualized the new Science and Language Arts building which will be the expansion of the present library on the northeast campus. Additional funds will determine whether reconstruction can begin when the doors are on the hinges of the Monsignor Barry Library in December.

College Talk

by Karla McGinnis

Lumberjacks of the Northwest, pirates of the Caribbean are two of the interests of Dr. Earl C. Beck, a folklore specialist who joined the faculty of Florida Atlantic University at Boca Raton recently.

At Salve Regina College in Newport, Rhode Island, the junior class is bursting with plans for renovating an old room on campus into a coffee house "for student communication and entertainment." The coffee house is open to all students of neighboring colleges, and will be used for fund raising projects by Salve Regina clubs.

From Marygrove College in Detroit, Michigan, comes news of poet Gary Snyder's visit to the campus. His advice to prospective poets is not to send poems to large magazines, where they possibly will never be read, but to send poetry "to the nearest mimeograph beatnik magazine" or have a poetry reading.

Imagine the ease of registering by phone. Not far from becoming a reality at many colleges, telephone registration is being carefully considered at Miami-Dade Junior College.

Now also rehearsing Arthur Miller's "The Crucible," Palm Beach Junior College students plan their production for March 2, 3 and 4 at Lake Worth.

And "Skin of Our Teeth," a Thornton Wilder creation, was recently presented at Jacksonville University at Jacksonville.

"Coeds at Tech?" read the headline from Worcester Polytechnic Institute in Massachusetts, and the accompanying story asks, "Where have all the

young girls gone?" The article presented the pros and cons facing the administration for admitting women to the century-old institute.

Fourteen years old and a math major? Students at Florida Atlantic University at Boca Raton find it hard to believe, too, yet Edith Stern is just 14 and maintains a 3.48 scholastic average at the college, where she carries 20 hours.

To give practical training to its student secretaries, Lansing Community College in Michigan permits its students to help in the academic offices handling registration.

With the emphasis on "freedom and its corresponding responsibilities," students at St. Mary-of-the-Woods College in Indiana made an early February retreat, unlike any of their past ones. The girls could choose one of three sections, headed by different retreat masters. Skits, films, and singing were vital components of the SMW retreat.

AS USUAL, THE UNUSUAL, ON COLLEGE CAMPUSES

... a "Gripe-In Forum" held at Miami-Dade College, while students griped and college officials took notes and channeled students to the proper authorities.

... rabbits, cats, giraffes, and hordes of kindergarten children rehearsing at Saint Mary-of-the-Woods College for the musical "Noah's Fludde."

... a ski club (snow skiing, of course) at Lansing Community College in Michigan. One ski trip down, no casualties reported.

Lay Director Explains Program

"Money is not our problem, we have that," said Father John J. Sullivan, National Director of the Extension Volunteers Program, "But there is a need for good qualified personnel." In an informal talk to the student assembly on February 6, Father emphasized that the work of the lay volunteers is only accomplished on a person to person basis.

Father Sullivan has headed the Volunteer program since its organization in 1960. He was one of the first priests to experiment with programs for lay missionaries in his home diocese of Oklahoma City.

In his 40 minute talk, which often referred to two recent Barry graduates, Peggy O'Grady and Natalie McCleskey, Father noted the need for laymen and women 21 to 45 of age to serve in the home missions of the States for at least one year. Volunteers work as teachers, parish workers, nurses, medical technicians and Newman aides.

OFFICERS . . .

(Continued from Page 1) that dorm alone, as a substitute for special functions of the present Kappa Rho.

The Student Affairs Committee would involve problems of both day and resident students, and would result in greater campus unity.

Noreen was quick to emphasize that the new system stresses a student government, with increased responsibility and power resting with the students.

Sociology Club Plans Activities For New Semester

The Sociology Club, at a recent planning board meeting, coordinated some diverse social research projects for its members during the second semester. These activities will extend beyond traditional social work programs into areas connected with a broader sociological orientation.

The members will observe the board activities of such city improving committees as the Urban League, League of Women Voters, Chamber of Commerce and others. The students will listen and participate moderately applying their sociological theories.

In addition to as well as continuing their weekly visits to Youth Hall, James E. Scott Community Center and Booker T. Washington School, the girls will also participate in a Careers for Social Work program at Miami-Dade Junior College in March. At this event the club will present "Plays of the Living," portraying a sociological problem.

The Lewis Mumford Film Series on City and Urban Development is being shown every Thursday in sociology 202.

NURSES . . .

(Continued from Page 1) The Saturday night benefit idea began when the nurses learned of the urgent plea, "every dollar is desperately needed at this time," made by board chairman, George Coury. Proceeds from the benefit will help the hospital reach the two million dollar goal needed for continuing operation. About \$60,000 is needed each month to keep the doors open until July 1.

National Players Present Comedies

Two famous comedies will be presented by the National Players from Catholic University Washington D.C., in the Barry College Cultural Series.

Shakespeare's famous comedy, *The Merchant of Venice*, will be performed by the players at a 2:30 p.m. matinee, Saturday, February 11, in the Barry auditorium.

On Sunday evening, February 12, an ancient Greek comedy by Aristophanes, *The Birds*, will be presented at 8:15 p.m. This play was adapted especially for the players by Walter Kerr.

In their 18 consecutive years of touring, the players have enjoyed success wherever they have travelled, both in the United States and abroad. This year's company consists of 15 young men and women.

MIAMI SHORES BAKERY, INC.

Wedding and Birthday Cakes
Our Specialty

9714 N.E. 2nd Avenue

Phone PL 9-5515

MEN WANTED!

BARRY COLLEGE
SCHOOL OF
SOCIAL WORK

Includes placements in:

PROBATION
COMMUNITY CENTERS
REHABILITATION
PSYCHIATRIC CLINICS



COME SOUTH
to
MIAMI SHORES,
FLORIDA

Apply:
Henry A. McGinnis,
Ph.D., ACSW

Box 1051-01

11300 N.E. 2nd Ave.

Zip code: 33161



"where a travel purchase is a pleasure"

MAKE RESERVATIONS EARLY

Shores Travel Center, Inc.

9723 North East Second Avenue
Miami Shores, Florida

Across from
Shores Theatre

BOB'S

Delicious Pizzas, Burgers, Submarines, Hot Dogs

— WE DELIVER —

CHAR-BROILED BURGERS — STEAKS — BAR-B-Q BEEF
PORK — RIBS — LOW CALORIE MILK SHAKES

PHONE 757-9116

"At Your Service"

Stone's Pharmacy

PRESCRIPTIONS FILLED AS YOUR DOCTOR WOULD HAVE THEM

11638 N.E. 2nd Avenue

All Revlon Cosmetics Available — Drive In Window

PL 9-6534

Emergency Service

Visit

Your

Campus Store

Greeting Cards

Novelties

Stationery

Cosmetics

Quality Paperbacks

THE ONE AND ONLY

Dan's
BEAUTY SALON

Miss Mary Adams — returned to Salon — also on the staff

Mr. Don Torres

Miss Thelma Cumiskey

Phone Plaza 4-3313
Plaza 1-9300

11510 N.E. 2nd Avenue

Program Begins Barry Offers Guidance Tests

A new service has been set up on campus this semester to aid students in making educational and vocational decisions.

The Barry College Testing Service, under the direction of Mrs. Thelma Medoff and Sister Marie Siena, O.P., will provide comprehensive testing in areas of general ability, achievement, aptitudes, interests, and personality.

Tests of general ability determine what the academic ability of the student is; whether she is slow or quick.

Achievement tests investigate how much knowledge a student has in a particular educational field.

Aptitude tests measure a student's ability in specific areas, to see if training in this area would be profitable.

Under the assumption that

people are more successful in fields of their own interest, the interest tests aid the student in making vocational choices by determining her likes and dislikes.

Personality inventories aid the student in obtaining a clear picture of who she is relation to her strengths and weaknesses.

Sister Marie Siena has indicated that students may avail themselves of this testing service by being referred to the service through an advisor or department moderator or any faculty member with whom she consults concerning educational problems.

The tests are free for full-time students. There is a nominal fee for part-time students.

Sister Marie Siena also said that the service will eventually be extended to the parochial and private high schools in this area.

Policy Upholds Frosh Attendance

A confirmation of the existing class attendance policy was made last week for the benefit of underclassmen, particularly freshmen, and the statement reads as follows:

"Freshmen are allowed as many cuts as there are semester hours in a course. Cuts in excess of this number may result in lowered grades and even to a possible dismissal from the class.

The policy is the same for both semesters of the freshman year.

When we refer to our attendance policy for the upperclassmen as the "student responsibility system" we mean it is the student's responsibility to attend classes. The instructor is not obligated to check the attendance".

LIST . . .

(Continued from Page 1)

P. Donohue, Sr. M. Jogues Eckman, O.P., Sr. Evelyn Maureen Fox, SNJM, C. A. Godde, E. Gonzalez, J. Gonzalez, J. Guinan, M. P. Healy.

D. Kali, R. Kalloch, M. A. Krayner, M. Luria, N. Lynch, J. Maguire, B. Norconk, G. Uawlowski, C. Pendas, K. Pudlow, C. Ravenet, A. Rimkus, D. Rolon, E. Shannon, M. A. Spieler, S. Superty, J. Tkach, C. Trudeau, D. Turbin, E. Turner, P. Vecchione, S. Velasco, M. M. Wich, L. Wolfe, N. Worth.

JUNIORS

A. Arroyo, J. Buckman, D. Boldin, N. Bevilacqua, B. Cataldo, J. Courtney, L. Dufresne, C. Elwood, P. Fry, A. Halas, S. Levy.

D. A. Merritt, L. Meyer, M. Meyers, P. Murzyn, P. Napolitano, M. A. Naser, J. Ohlsen, C. Orleman, D. Osborn, P. Pearson, P. Rackstraw, P. Raia.

Sister Consolata Reale, M. E. Revilla, M. Rice, C. Richards, J. Rothstein, E. Stehle, M. C. Ungar.

SOPHOMORES

K. Ahlstrom, M. Berube, V. Calvano, E. Cerra, A. Conlin, R. Duggan, V. Esquenazi, B. Greene, M. Hartmus, C. Hiegel.

N. Landa, M. Leonard, D. Malone, E. Morris, I. Pozo, W. Preston, R. Scully, D. Singer, K. Sweeney, S. West, M. Wolfarth.

FRESHMEN

C. Alberte, F. Bacon, M. A. Barreto, P. Bickerstaff, B. Chivara, A. Chiocca, A. Curran, D. Galazka, N. Hamilton, J. Lenihan, M. Lorenzo.

K. McGinnis, A. Moss, D. Muccio, C. Reilly, S. Reilman, M. Slater, B. Souza, P. Thomas.

ZENITH - RCA - MOTOROLA TV, RADIO, TAPE RECORDERS SALES and SERVICE

☆ Customers are friends We promise to keep it that way

MID-CITY TV

Established 1941

9713 N.E. 2nd Ave. 757-7615

TEACHERS NEEDED FOR 1967

Elementary (K-8) High School

Special Education

Vocational Education

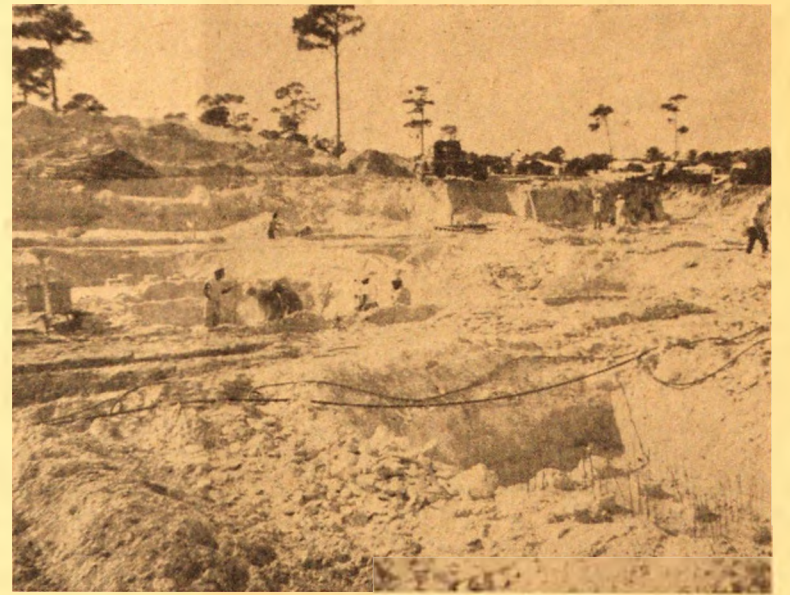
Write to:

DIRECTOR OF TEACHER RECRUITMENT

Chicago Public Schools - Room 1005

228 N. LaSalle Street

Chicago, Illinois 60601



It's the first floor of the new library and the dirt pockets mark what might be part of the audio-visual room, or offices for the School of Social Work, or the reading room. Construction crews are working hard and fast. Someone told them we're hanging curtains next week!

Campus Clips

Friday, February 10: The Sodality Valentine's Dance.

Saturday, February 11: The National Players presentation of the *Merchant of Venice* in the Barry College Auditorium, at 2:30 p.m. Tickets will be on sale for two and three dollars.

c-c-c-c-c-c

The Medieval Arts Festival-II, featuring the Barry College Madrigal Singers, directed by Sister Alma Christa, at the Spanish Monastery, at 4:00 p.m.

c-c-c-c-c-c

Sunday, February 12: The Culture Series presentation of *The Birds* at 8:15 p.m., in the Barry College Auditorium.

c-c-c-c-c-c

Class Meetings: Monday, February 13, at 11:00 a.m.

c-c-c-c-c-c

Tuesday, February 14: The Junior Class Raffle drawing for the Harley-Davidson will be held at noon in the Thompson Hall Lobby. Other prizes are offered and tickets will be on sale from any junior, for 50c, up to the time of the drawing.

c-c-c-c-c-c

Sophomore Class Day.

c-c-c-c-c-c

February 17-19: Student Retreat.

c-c-c-c-c-c

Tuesday, February 21: Freshman Class Day.

c-c-c-c-c-c

The annual Tree Planting Ceremony.

February 22-25: Arthur Miller's great play *The Crucible* will be presented in the Barry College Auditorium at 8:15 p.m.

c-c-c-c-c-c

GRE testing: A conflict has arisen between this test and the NTE tests. Senior education students must take the test on March 18, and the NTE tests will be available again on July 1. Registration forms for the July testing are now available in the Dean of Students office.

c-c-c-c-c-c

Saturday, February 18: Florida Institute v/s Biscayne in basketball at 3 p.m. at North Miami Beach auditorium.

c-c-c-c-c-c

Sunday, February 10: "Behold A Pale Horse" starring Gregory Peck and Anthony Quinn at Carroll Hall, Biscayne College.

c-c-c-c-c-c

Tuesday, February 21: Boat Cruise sponsored by the senior class of Biscayne. Tickets for the trip along the Intracoastal Waterway are being sold by the senior class members only at \$4.00 a couple. No stag. Slacks may be worn.

c-c-c-c-c-c

DURING LENT: Liturgy and our Lives in the 20th Century. Informal discussion sessions in Room 108 on Wednesday evenings, 6:15 - 7:00 p.m. Sister Judith Mary, leader.



Daily editions of the Miami Herald and Miami News can now be purchased from the newsstands outside the Post Office in Thompson Hall. One dime keeps up with the current world affairs.

FLOWERS — GIFTS — FRUIT SHIPPING — GIFT BASKETS

Anthony's Florist & Gifts, Inc.

"We Deliver Happiness"

Now at Two Locations

11603 N.E. 2nd Ave.
Miami, Florida 33161
Phone 758-4787

1224 N.E. 163rd St.
No. Miami Beach, 33162
Phone 947-6639

The Girl who gets ahead is
The Girl who Reads
The
Daily
Press



Subscribe to:

NEW YORK TIMES
NATIONAL OBSERVER
WALL STREET JOURNAL
CHICAGO TRIBUNE

Special College Student Rates

Newspapers delivered for 1, 2, 3 or 4 months

Subscription orders taken in the News Room, Thompson Hall

National Hardware & Paint Co.

9700 N.E. 2nd Avenue
Miami Shores, Florida

The "COMPLETE" Hardware Store"

SERVICE • QUALITY

Phone 758-3049

ANGELICUS

Barry College
Box 36
Miami, Florida 33161

U. S. POSTAGE
PAID
PERMIT No. 794
MIAMI, FLORIDA
Non-Profit Organization