

Nine Sections To Be Offered In Eng. III

Freshmen Can Easily Fulfill Composition Requirement In Fall

Incoming freshmen who wish to fulfill their written composition requirement may choose from nine sections of English 111, Freshman Composition and Literature.

The different sections provide a wide range of selections for reading and discussion. They are offered at various times and days in order to facilitate scheduling. Students may examine the texts at the Campus Book Store or may read the course descriptions available from English Department counselors.

English 111 gives students an opportunity to concentrate on improving their writing skills while enjoying literature. Knowledge of better writing techniques will prove helpful in other college classes and in business positions where employees may be asked to write letters and reports, to edit copy, or to perform other tasks requiring writing skills.

Freshmen who have Advanced Placement or CLEP credit for three or more semester hours of Freshman Composition may enroll in English 213, Survey of English Literature, which is traditionally a sophomore class. Junior or Senior English majors who for some reason have not yet taken this course will find it helpful as a review for the Undergraduate Record Examination.

Transfer students, whether they are English majors or not, will find open to them several other literature courses. English 325, American Literature to Walt Whitman, surveys American writers from the period of Colonization and the Revolutionary War through the time of the Civil War or American Renaissance.

Juniors and Seniors may enroll in English 327, The Romantic Poets, or in English 423-523, Restoration and Eighteenth Century Literature.

Major writers of the two periods will be studied in these courses.

Graduate English classes are open only to those undergraduate students who have completed all undergraduate English courses offered.

Barry's program for the English major is designed for future teachers of English in junior or senior high school, for students planning to study for a Master's degree in English, for students who intend to enter law

school, medical school, federal government service or private industry, and for those interested in extending their cultural background.

The English Department makes every effort to broaden each student's education by cooperating with other departments in offering interdisciplinary courses such as Humanities, Philosophy of Art, and the American Studies program.

Dear New Student:

This is our personal welcome to you, a new student at Barry College. We wanted to be one of the first to welcome you so that's why we're sending you a special edition of the campus newspaper, the HOURGLASS.

It's intended to introduce you to another of the College's workings. After all, familiarization with campus activities will help to make your adjustment easier.

We've included articles meant to entertain and some to inform.

Please feel free to drop by our office, 119 Thompson, when you arrive on campus. Our staff box is virtually empty, so if you'd like to help with the HOURGLASS next semester in any capacity, please let us know.

Silvia Andreani and Diane Johnson
Co-editors, HOURGLASS

Peer Groups Enhance Orientation

By SILVIA ANDREANI

The Peer Group Counseling Program is geared to help new students and freshmen to cope with the stress of adjusting to a new environment and provide them with ongoing emotional support during the entire semester.

The results of the Fall 1974 program revealed that almost 100 percent of the members predicted to successfully complete their first year of college and felt that the program was valuable experience.

Studies indicate that a high percentage of freshmen students recall experiencing difficulties such as depression, anxiety, irritability, and insomnia during their early life as a college student. Other studies state that the prevalence of emotional maladjustment in freshmen is increasing; and some studies indicate that the incidence of help-seeking is usually high among freshmen. Freshmen have proven to constitute a specific high-risk group.

Group experiences are not only beneficial to the freshmen members but also the leaders. Sophomore volunteers are trained to become leaders. "The knowledge of leadership



skills is useful in any walk of life," comments Dr. Ann G. Ruben, who developed the Peer Group Counseling Program. Counselor, Mrs. Mary Ellen Hrutka states, "Members and leaders learned more about themselves and others through the group experiences."

The major purpose of group experiences is geared to the identification of developmental tasks which need to be accomplished during

adolescence to promote mental health:

- (1) Experiences to develop independence as well as appropriate interdependence.
- (2) Experiences to help with ability to recognize and deal with uncertainty.
- (3) Experiences to develop a personal set of values and standards which might or might not reflect values and standards of peers and parents.

(4) Experiences to develop a sense of sexual identity and satisfaction with one's own femininity or masculinity.

(5) Experiences to develop mature interpersonal relationships and social skills.

The Peer Group Counseling Program is very new to Barry College due to its initiation in 1972. Dr. Ruben has received over 40 inquiries from various colleges and universities in the United States inquiring about this successful program.

Both Dr. Ruben and Mrs. Hrutka agreed that Peer Group Counseling is a "People Helping People Program."

Opinions from Former Leaders and Members

"I became acquainted with Peer Group Counseling during my freshman year. By being a member of peer group it helped me to complete my freshman year with less anxiety and I felt part of the Barry family. From this experience, I believe this program is great and worthwhile participating in. This is why during my sophomore year I was active in assisting a group of freshmen, so that they would feel as a member of the Barry family and have successful years while attending college. Peer Group Counseling is totally together!" explains Gloria Page, a former member and leader.

Jennie James, a member of Gloria's group, comments, "Being new not only to Barry but also to South Florida, I felt the Peer Group Program was an excellent way to begin to feel more comfortable with fellow students and with Barry. Gloria Page, the leader, made us all feel extremely welcome and brought the group together as a band of friends and not just another activity for new freshmen to go through. I cannot express adequately how happy I was to be a part of that group! Besides, I learned a few things about myself — and that's what it's all about!"

A former member and leader, Carmen Blanco typified her group experience as, "It's a family type thing. We were one big group that worked together. I still see my members and we get along great. I think it was a very worthwhile experience

From The President's Desk...



To the incoming students of Barry College:

In the name of all of us here at Barry College I want to extend a preliminary word of welcome to you with the expectation of greeting you in person when you arrive on our campus.

There are many people making plans for your arrival and it is my sincere hope that you will find your days at Barry College filled with opportunities for personal development so that your own life's experience will be richer. Please let us help you make the most of one of the most important times of your life.

Cordially,
Sister M. Trinita Flood, O.P.
President

Staff and Tours

To Aid And Extend Welcome

The Library staff extends a warm welcome to Barry's new students. We hope you will frequent the library and be known personally here. Although you will be given a tour of the library your first week on campus, you can learn a great deal more about the use of the library's print and non-print collection if you will arrange with a reference librarian for a private or group instruction session. Feel free to ask for reference help any time. The library handbook, which you will receive, has information you will need to make the library a vital part of your academic life.

Upperclassmen Make You Feel At Home

Sr. Linda Bevilacqua, Dean of Student Affairs, has initiated a Student Assistants Program as a part of the orientation program to freshman and transfer students.

New students can expect a letter or phone call from their "Upperclassmen" towards the last week of July. They can also expect a personal greeting when they arrive on campus. They will receive a tour of the campus highlighting the location of all services the College offers and the identification of key administrators, faculty and upperclassmen.

The Upperclassmen will also be available to answer any questions the student or family may have about Barry.

New students will be assigned to an upperclassman in the same major field or, at least, in



the same school. Each upperclassman will be responsible for approximately 3-5 new

students. The program promotes meeting other new students.

Some Suggestions:

What To Do On The Week-end!

By SILVIA ANDREANI

Believe it or not, but between the studying, term papers, and general hustle, bustle of college life, one does have free time to spend with friends.

Miami is very versatile when it comes to weekend entertainment. Hollywood's latest films can be seen at the local "silver screens." One neighborhood theatre in particular shows double features on the week-ends for only \$1.50 per person.

There are many fine restaurants in Miami and Miami Beach that are guaranteed to satisfy the most distinguished palates. Sometimes filet mignon is the cry from your stomach, but if your purse is in a pinch, don't fret, two blocks away you can get a Big Mac.

Miami receives many well known rock groups during the school year. Last year the Doobie Brothers, America, Loggins and Messina, Guess Who, and Santana made appearances. (Just to mention a few!) Concerts usually cost about \$6.00 per person.

What to do if your money runs out? The beach is about ten minutes away and is just beautiful day or night. Miami

Shores is very nice to bike ride or even stroll through. Crandon Park on Key Biscayne even has a zoo if you're a nature nut!

Even if you don't have money, you still might like to window shop. There are two large air-conditioned shopping malls both

about fifteen minutes away. Also, they are both easily accessible by the Metro bus system.

You can always find something to do off or on campus!

Fine Art Exhibits To Include Campus Talent

By SILVIA ANDREANI
Exhibitions, concert recitals, and workshops to satisfy everyone's tastes are sponsored monthly on campus by the Division of Fine Arts.

Activities range from printmaking and ceramic sculpture exhibitions to a theatre production of "Rosencrantz and Guildenstern." Most of the

presentations display the talents of the Barry faculty members and students.

Pictured at right is one of last year's student exhibits displayed in the Library Gallery.

September's tentative schedule is as follows:

September		
8-30	— Joseph M. Ruffo — Printmaking Exhibition — Library Gallery	Library Hours 8 p.m.
8	— Preview Reception — Library Gallery	
10	— Division of Fine Arts — Faculty — Student Party — Florida Gardens	6:30 p.m.
10	— Music Department — Community Chorus Auditions — Paul Eisenhart, Director — Recital Hall	7 p.m.

MEC's Course Offerings Growing With Enrollment

The Miami Education Consortium at Barry College, now in its fifth year, has just published its Summer-75 offering totaling 28 courses. This figure may not sound impressive until one knows some of the historical background of this program.

MEC, a division of Barry College, and a consortium between Barry College and Embry-Riddle Aeronautical University at Daytona, was formed in 1971 to provide

continuing education to adult students in evening classes. Through Barry College, a student may obtain a B.S. degree in Business with concentration in the areas of Accounting, General Business, Marketing-Management, Office Administration, and also in Professional and Liberal Studies. Embry-Riddle Aeronautical University offers a B.S. degree in Aeronautical Studies with areas of concentration in Flight

Technology, Aviation Management, Airport Management, Maintenance Technology, Applied Math., and Aviation Education.

What You Can't Live Without

By DIANE JOHNSON

The most priceless possession I had in my dorm room my freshman year of college was an orange and pink shag rug about six feet in diameter. It livened

coordinate the bedspreads or even get matching ones.

Throw pillows and a bean bag chair also decorated my dorm room. The bean bag was utilized



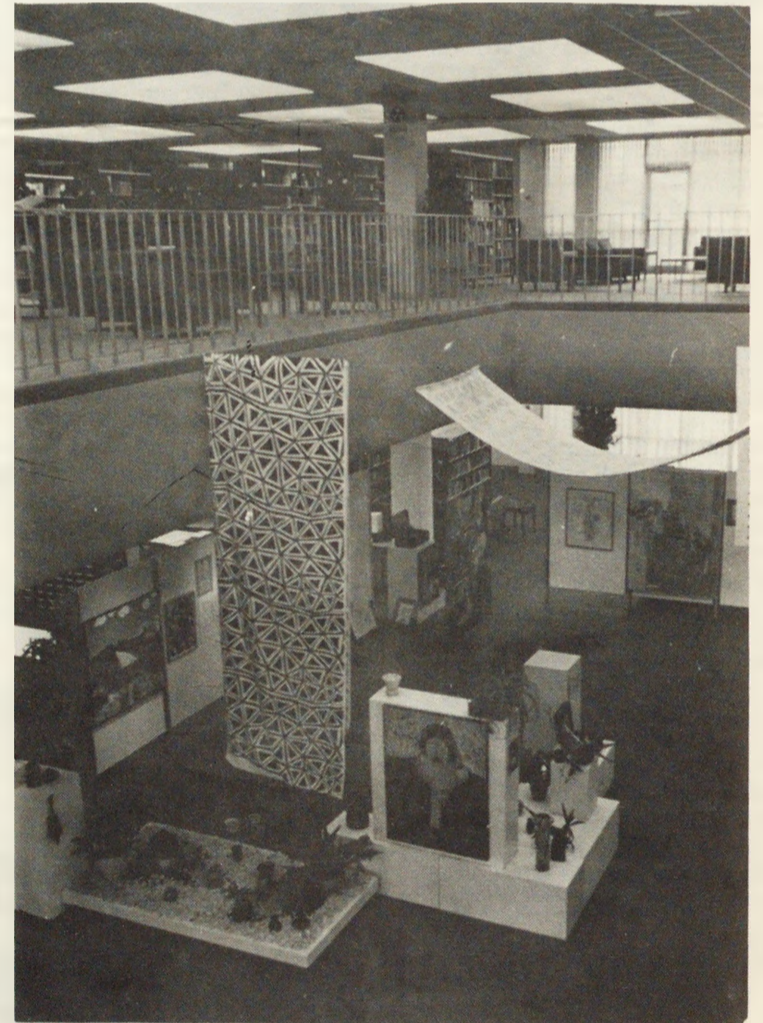
Don't forget your bathing suit and suntan lotion.

up the room and was ideal when entertaining friends. Instead of sitting on the cold floor, there was a warm rug that didn't take up any space.

It's best to wait until you're on campus and have met your roommate before buying a bedspread. That way, you can as a bed if we had a guest and there was no other room for

them. It was also the most comfortable place to study.

Bring a few of your prized possessions from home to liven up your dorm room and to help you through those homesick times. (Believe me, you'll have them, but don't let that scare you off from the great experience of being more on your own.)



HOURGLASS
Barry College
P.O. Box 193
11300 North East Second Avenue
Miami Shores, Florida 33161

Published by the students of Barry College. Editorial views herein are not necessarily those of either Barry College faculty or administration.

Summer edition made possible by:
Co-Editors: Silvia Andreani, Diane Johnson
Advisor: Lourdes Fleckenstein



Get Involved...
Be A Reporter For Your Campus Paper
The HOURGLASS
See story on page 3.

Patronize Area Shops

By DIANE JOHNSON
Exit the front gate of the college, going north on N.E. 2nd Avenue. The first point of interest is Bob's — the best known Italian and American restaurant to Barry students.

Next door, is Dan's Beauty Salon. Don't overlook them for styling your hair.

Also on N.E. 2nd is Stone's Pharmacy. They offer the convenience of a drive-in window and emergency service.

study munchies, magazines, or a beer.

Roger's, a beer and pizza pub, is a local hang-out for Barry students. It's within walking distance of the campus.

Student Shopping Guide

This is the view after leaving the front gate of the College on N.E. 2nd Avenue

Bob's on the left, as shown by the signs



They offer a wide variety of sandwiches, all at more than reasonable prices. Rumor has it they have even named some of their sandwiches after Barry students.

U Totem, on the opposite side of the street of the Texaco Service Station which will answer all your car needs, is great for odd hour pick-ups,

Also, in the same area as Roger's, is Blue Ribbon Dry Cleaners, Adolph Ricci Barber Shop, and to save the best for last, Ness Konditori Bakery.

The closest fast food hamburger spot is McDonald's. Follow N.E. 2nd Avenue to 119 Street and go forward one block past N. Miami Avenue. It's on the right side of the street.

Positions Open On Newspaper

By SILVIA ANDREANI
You don't have to write to be on a newspaper staff!

The HOURGLASS is the Barry College campus newspaper. We are in need of vibrant individuals who are interested in being on our staff.

If you have never worked on a publication it may sound strange to you to hear that you're needed even if you are not a writer. We have positions not only open for reporters but also for photographers, artists, cartoonists, poets, commission

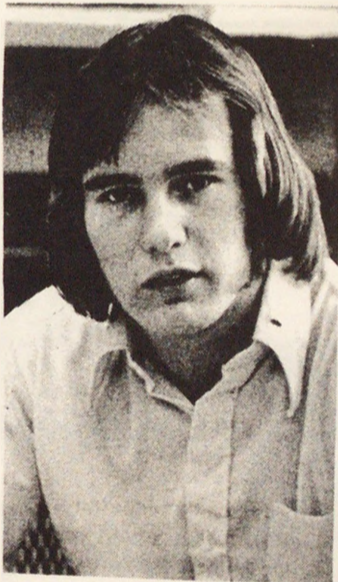
salepersons, circulation managers, and typists.

At the present time our staff has been very limited to a small number as the HOURGLASS was brought back to life after a dormant fall semester last year. We have many innovative ideas for this coming semester, but they cannot become tangible until we have some interested new recruits.

Write to us at Box 193 or contact us at Thompson Hall room 119 if you would like to join us and volunteer your talents.

Metanoia Embraces Religious Dimension

By DIANE JOHNSON
Metanoia is a Greek word meaning "change of heart." The newest club on campus, Metanoia, is attempting to change people's hearts, to make themselves more God-like and more aware of God in all of life.



Bill Fox

The members of Metanoia voted themselves a club and

presented a charter to Student Government. In their constitution their organizational goals are listed: to promote theological study and reflection on man's religious nature so that intellectual, moral, and spiritual growth can proceed together; to sustain a Christian community on campus; to integrate our ministry of caring with other campus and local community programs; and to help the Christian community on campus to serve its members and others who come to share our life.

Bill Fox, a transfer student last semester, is the student representative for Metanoia. He is strongly working on making the goals of the organization a living, working truth. After all, "Christ made Metanoia his gospel attitude. There's a strong emphasis on the word Metanoia in the Scriptures. There's also a distinct emphasis on external works. The word says so much there's a strong connotation of external works."

That's why Bill feels Metanoia is so important to the College. "There's a strong

emphasis on serving the College community. We're also serving one another within Metanoia: edifying one another, meeting spiritual needs. It all goes back to our four goals."

Bill comments, "It's a well-rounded group that appeals to many different trains of thought with an emphasis on service. Membership is always open. We're a new group but we're growing stronger all the time." Presently, there are 34 members.

Fr. Neal McDermott the moderator of Metanoia, feels the group needs the participation of more blacks and Latins. "We need their rich traditions, too. The organization is not a quote "Catholic thing, unquote," comments Fr. McDermott. He feels his role as moderator is "to promote ideas to accomplish goals. I don't set the agenda, the students do. It's coming from the students for the students."

Metanoia has developed out of the Campus Religious Congress. The change of name was to encompass the "true change of the religious dimension of happy and sad moments," according to Fr. McDermott.

Metanoia was responsible for the Inter-Campus Encounter that grouped together 90 people last October. Fr. McDermott felt "the liturgy was a nice party that promoted the religious dimension of the campus. It proved you don't have to be weird to be a Christian."

Famous Bottle Cap Inn

Fine Italian and American Cuisine

Popular Prices Eat In Take Out

Lunch 11-3 Dinner 5-12

BEER-WINE-LIQUOR COCKTAIL LOUNGE

BEST PIZZA IN FLORIDA!

688-9133 HOAGIES—SUBS

1300 N.W. 119 St. Miami

"At Your Service"

STONE'S PHARMACY

Prescriptions Filled - Your Doctor Would Have Them

11638 E. 2nd Avenue

ALL REVLON COSMETICS, AVAILABLE - DRIVE IN WINDOW

WE NOW CARRY RUSSELL STOVER CANDY

PL 9-6534 - PL 9-3161

Emergency Service

Announcing
MR. EMILIO
Dan's
BEAUTY SALON

Specializing in Styled lamp cuts.

PHONES: 754-3313 751-9300

11510 N.E. 2ND AVENUE

Sporteen Casuals
PANTS-JEANS-TOPS-SKIRTS-DRESSES
Sizes 3-15 and 6-16
"Specialists in Junior and Ladies Apparel"
Colonial Shopping Center
488 N.E. 125 St. North Miami, Fla.

BOB'S
ITALIAN-AMERICAN FOODS
11500 N.E. 2ND AVENUE
-PHONES-
754-6062 757-0110

Address and stuff envelopes at home \$800 per month, possible. Age and location does not matter. Offer details, send 50 cents (refundable) To: Triple S, 699 G29, Hwy. 138, Pinon Hills, Ca. 92372

To:
Triple S
699 G29, Hwy. 138
Pinon Hills, Ca. 92372

Alumni Association Angle



By GAIL WRIGHT
Alumni Director

The Alumni Phone Campaign, held from May 12-23 at Wometco Enterprises' (Channel 4) personnel department, netted \$20,381 in pledges from 768 alumni, thus exceeding the \$18,000 goal. Forty-eight faculty, alumni, staff, and administrators called alums across the nation on six WATS lines. In addition to the tremendous upsurge in alumni support of the college, much information for the Alumni Newsletter and many address and name changes were obtained. Excluding the Miami area, which was contacted in late February, 1,200 phone numbers were available and 65 percent of those stating a pledge had either never given or had not given within the last three years.

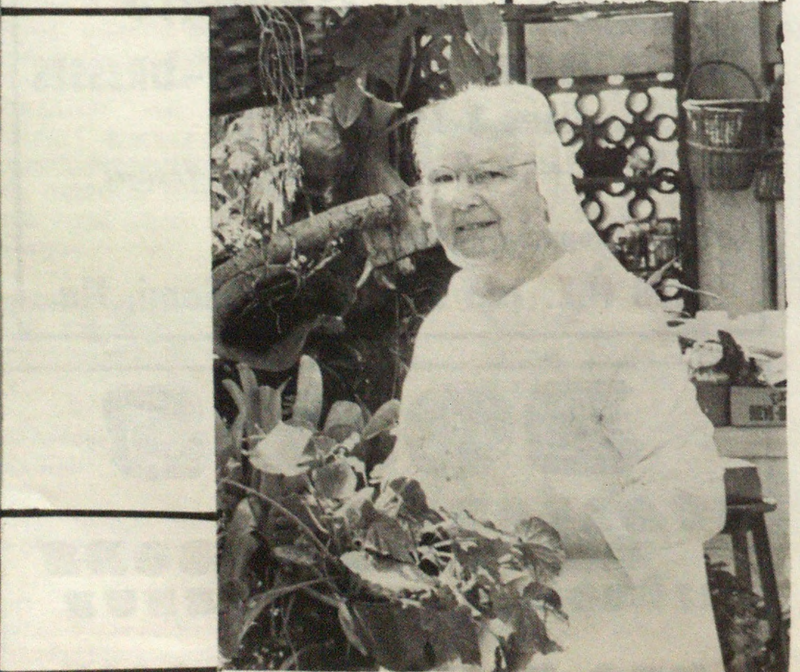
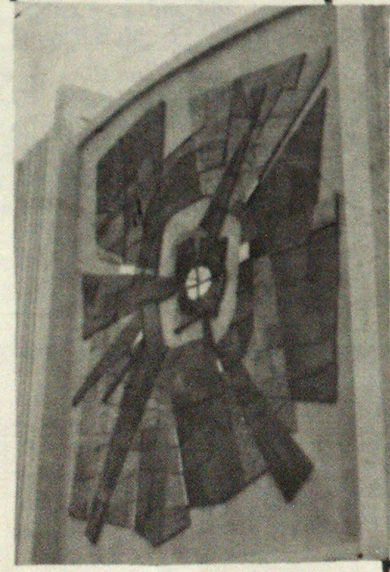
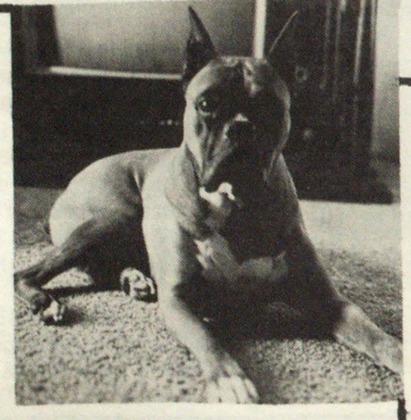
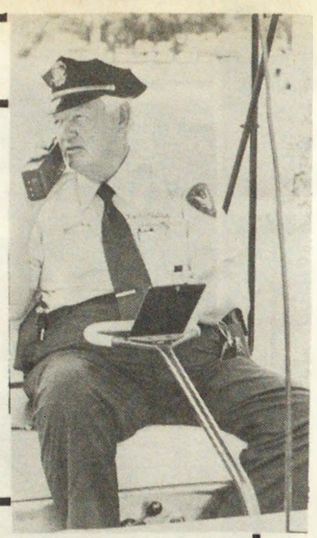
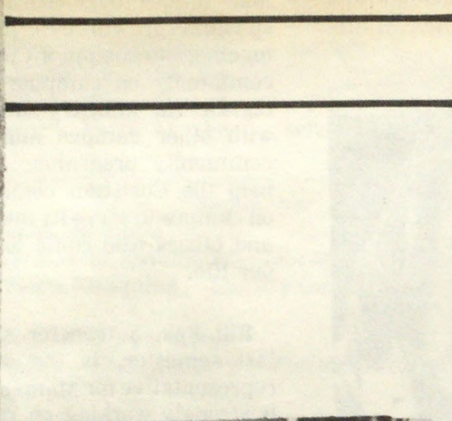
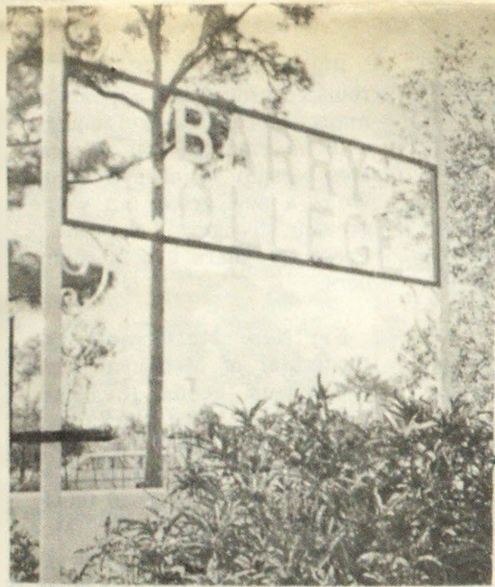
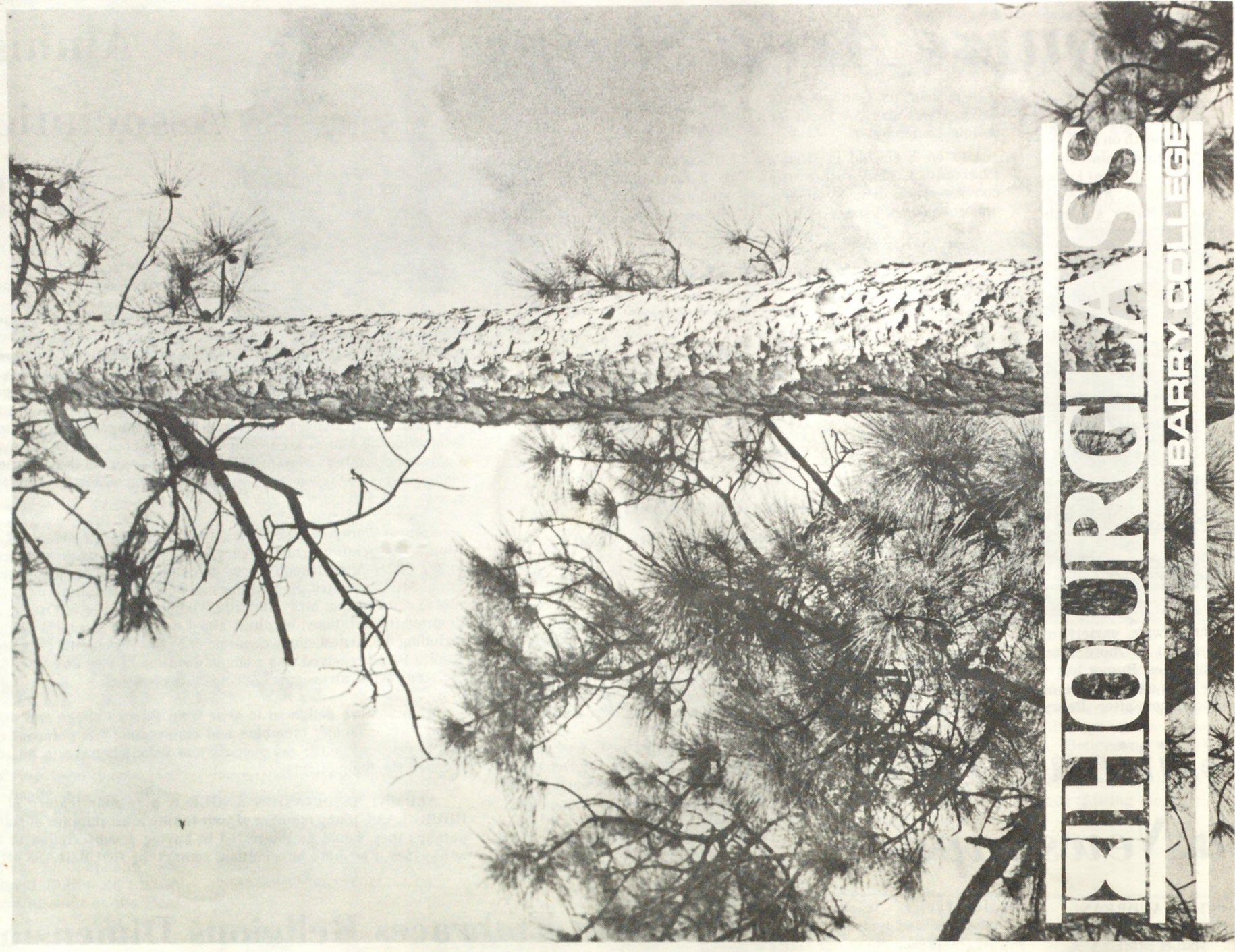
Denise Campbell, newly-installed National President of the Alumni Association, called every night the first week and raised \$1,805. Sister Alice Joseph Moore came up with the highest average gift at \$41.42 and Mrs. Neill Miller had the highest number of donors (26) in one evening. Mrs. Maryella Whipple, Director of College and Community Relations, obtained about a third of the total pledges, including the largest single donation of \$1,000. Among the gifts Sister Trinita Flood received was a single donation of \$500 and Rev. Neal McDermott had an evening high of \$725 in pledges.

Alumni were delighted to hear from Barry College and asked about former faculty members and classmates. The personal contact is responsible for the success and volunteers are to be commended for their efforts.

ALUMNI ASSOCIATION ANGLE is a regular feature of the HOURGLASS. If any member of your family is an alumnus of Barry, perhaps they would be interested in buying a subscription to this newspaper. For more information, contact the HOURGLASS office.

HOURGLASS

BARRY COLLEGE



HOURGLASS

BARRY COLLEGE

Box 193
Barry College
Miami Shores, Florida
33166

TO

