

**Student Development
Career Day
Held Today
Page 2**

**Barry at Oxford
Returns This
Summer
Page 6**

**Lunchtime Theatre
Scores a Hit on
Campus
Page 9**

**Barry Runners
Take On Metro Dade
Marathon
Page 10**

Volume LI Number 4

Monday, February 24, 1992

The Barry Buccaneer

Andreas-Sponsored Chapel Renovations Blend the Old with the New

Cor Jesu Chapel (the Heart of Jesus) is an appropriate name for a building that is the heart of Barry University. The Cor Jesu Chapel was one of the first buildings to stand on the Barry University campus. The chapel was constructed in 1940. With the years of wear and tear from South Florida's climate on the building, and the changing needs of the University community, it was time for the chapel to get a facelift.

On March 22, 1991 the money for the chapel restoration was officially donated by Mr. Dwayne and Mrs. Inez D. Andreas in living memory of Thomas P. and Mildred A. O'Neill. The Andreases donated one million dollars toward the chapel renovations with the stipulation that any money left over would go to the University's endowment fund. Approximately \$180,000 was used on the refurbishment.

Mr. Andreas is the Chairman of the Board of the Archer Daniels-Midland Co. Mrs. Andreas is a Barry Graduate, having received her M.S. in 1975. She joined the Board of Trustees in 1976 and became Chairperson in 1977.

The Heart of Barry

The Cor Jesu Chapel has been the center of Barry University for over fifty years. With this in mind, the renovations had to combine the tradition of yesteryear while meeting the needs of today's Barry community. The United States Catholic Conference Bishops document on liturgical space, "Environment and Art in the Catholic Worship," was used as a guide to this project.

Responsible for looking after the renovations, Tom and Anne Glisson of the Wysong Company were the interior designers, and the Centrex-Rooney Company created the exterior design.

Many changes have been made to the chapel, some for practical purposes and some for aesthetic value. Among the most obvious changes, the exterior and interior were repainted, and the wood paneling was refinished. The painted glass windows, originally made to last only a few years, were cleaned thoroughly, and their trim was painted. New carpeting was installed, and a new confessional was built in the rear.

In keeping with the design's ideals, the tradition and sense of community of Barry is seen throughout the refurbishment. One example of this marriage between the traditional and the modern community is

the work done to the statues of Mary and Joseph. These works, on the side alters, were stripped to their natural wood and then lacquered. At the first 10:00pm mass of this semester, the community wrote their hopes for themselves and the Catholic Church on slips of paper that were later entombed in the pedestals of the statues. Years from now, perhaps when the chapel is restored for its centenary, these messages will be read by the students of 2040.

New Schemes, Traditional Values

In every church there must be three things: an ambo (or pulpit), a presider's chair (to show the human person of Christ), and an altar. Interestingly enough, a crucifix is not a requirement.

The ambo is entirely new. Its structure is practical because it raises the priest above the congregation. This gives the reader an empowering feeling of the spirit within.

The new altar is actually a combination of the former side alters, outfitted with a new piece of marble as the base—another example of the marriage between traditional and the modern. The altar was moved forward in order for the community to gather around during the celebration of the Eucharist.

The Presider's chair has been replaced with new furniture for the choir that coordinates with the new color scheme of terra-cotta and muted green.

Symbols of Christianity

Behind the presider's chair is a free-standing wall. On this wall is an equilateral cross whose symmetry emphasizes the balance of Christ's divinity and human spirit. In each of the four quadrants is an icon of one of the evangelists: Matthew, Mark, Luke, and John. The cross symbolizes the suffering and death of Jesus, while the icons depict the spirit of the Resurrection.

Further behind the free-standing wall is the new reserved chapel. The "Environment and Art in the Catholic Worship" document states that there must be "a room or chapel specifically designed and separate from the major



A view of the newly-renovated chapel as seen during its dedication mass.

Photo by Javier Ramirez

space so that no confusion can take place between the celebration of the Eucharist and the reservation..." The use of the wall allows for this separation between the two areas of the chapel.

Last, an addition was made to the Cor Jesu Choir. A new organ was installed. The former pipe organ was donated to a nearby parish.

The Dedication Ceremony

On January 31, 1992, retired bishop Thomas Grady dedicated and blessed the walls of the chapel and the new altar. On this date a special mass was said for Tip and Mildred O'Neill, in whose memory the resources for the renovation were made.

In the back of the chapel there reads a plaque "in living memory... Thomas P. and Mildred A. O'Neill... in service to God, Country, and Family." Tip is suffering from cancer, and the Andreas wanted the

O'Neills to be honored for their great public service while all could be present to enjoy the celebration together.

Thomas P. (Tip) O'Neill is the former Speaker of the House of Representatives of the United States. He retired from his seat in 1987 after fifty years of public service. At the time of his retirement, the House Majority Whip, Thomas Foley (D-Washington), said that O'Neill transformed the speakership into a "truly national office."

An eye to the Future

Some at Barry University are welcoming the refurbishment with open arms; others are apprehensive about the different set-up of the chapel. While differences of opinion are bound to occur, we must remember that the purpose of the Cor Jesu Chapel is to celebrate the

continued on page 2



A picturesque view of the Cor Jesu Chapel.



The Cor Jesu Choir preparing for mass in the newly restored campus chapel.

Chapel Renovations

continued

community of Barry University through the worship of the Roman Catholic faith.

The chapel renovations were made to help aid in the celebration. By marrying the old with the new, the designers sought to bring a balance to Barry's future.

by Amy Liptak

The Hunger Clean-up is coming!

Look for announcements all around campus



Dr. Joseph P. McCallus confers with Dwight Lauderdale during the Brinkley Award Banquet.

Brinkley Award Honors CNN's Bernard Shaw

December 16th set still another milestone for Barry University. The Annual David Brinkley Award for Excellence in Communication was presented to Bernard Shaw, principal news anchor for the Cable News Network (CNN).

The event began with a lecture, followed by a question and answer period in the Kostka Room of Thompson Hall. There, they were asked about their lives and careers, many of the news stories covered and advice for future journalists.

A private luncheon was held with Brinkley and Shaw in the Waldhorn Room of the Andreas School of Business. The award was presented to Shaw by Brinkley and Barry University President Sister Jeanne O'Laughlin, OP.

Distinguished guests and speakers included Sister Marie Marie Hurley, Professor Emerita of Humanities and Mrs. D. Inez Andreas, Chair of the Board of Trustees. Reverend John O'Grady, Chair of the Department of Theology and Philosophy, gave the invocation.

The award was established in 1987 and presented to Brinkley that year. The name was changed from the Barry University Award for Excellence in Communication to the David Brinkley Award for Excellence in Communication. The second recipient was Edna Buchanon of *The Miami Herald*. It was presented to Don Wright, political cartoonist and winner of two Pulitzer Prizes,

in 1989. Last year, it was presented to Channel 10's distinguished anchorwoman, Ann Bishop, who was celebrating 20 years at WPLG.

This year, there were many representatives from the local media, including Bishop and her co-anchor Dwight Lauderdale.

"I though it was a very good experience and a very good opportunity for us communication students to get first-hand information on the profession from such knowledgeable people," said senior Mabel Perez.

"I was enlightened by their personal experiences," said junior Richard Savino. "I was amazed they were such down-to-earth people. . . they really showed their emotions and feelings."

"It was a great opportunity to get first-hand knowledge and impressions from these professionals who are exposed to the making of the news," Alex Franco, a senior said.

"From my point of view, the Brinkley Award ceremony brings media contacts to campus better than anything else we do," said Michelle Morris, director of University Relations. "This year, we had a standing-room only crowd, including close to 100 media representatives."

The ceremony provided a rare opportunity to all those who attended to meet with two luminaries in the world of communications.

by Rosaria Castell

Student Development Center Offers Variety of Services

When faced with the question of what the Student Development Center is, most students refer to it as "the place where you go to get a part time job." But is that all the Center consists of? According to Jane Bower, director of Student Development, the Center consists of much more than a quick-stop job search service. Student Development encompasses a wide variety of services ranging from career counseling and credential (placement file) services, as well as part-time as well as full-time career

position listings. According to the 1991-1992 Barry University catalogue, "the services are designed with the student in mind, and to seek to encourage personal responsibility on the part of students in life and career planning."

In order to transform students into career-oriented individuals who can make concrete decisions based on skills, abilities and interests, the Student Development Center provides career counseling,

Continued on page 3.

SGA Book Sale Falls Flat

Imagine a world where you, the average Barry student, gets paid more for a book you return than the bookstore gives you. Think it is only a dream? Unfortunately it is, at least for now.

As John Ducey, SGA president, said, "it's pretty much a lost cause."

The book sale program developed by Student Government was designed to match students who wished to sell a book with those who wished to buy it. The program was developed to offer students an alternative to the campus bookstore.

Under the proposed S.G.A. plan, a students would send their name, box number, the description of the books they wanted to sell, and \$1.00 for the cost of printing a full list of available book sellers and buyers. Students would consult the list and would then be able to meet face-to-face to make the sales. Unfortunately, the book list was not printed this semester.

Two problems were outlined by Amy Liptak, Public Relations Coordinator for SGA: "there's a problem with contacting the commuter students...and there weren't enough responses..."

Neither commuters nor residents were very involved with the book exchange. It would appear that a lack of publicizing was a factor in the lack of interest.

Another problem was the uncertainty of what books would

be needed for next semester. Since some teachers change their books every semester it's hard to buy ahead, and without the cooperation of the campus bookstore, a master list of book information is difficult to get.

Through better planning and more publicizing the student book exchange might get off the ground next fall. However, unless the student body backs this program, a great idea is destined to go the way of the dinosaur.

by Nicole Seaberg

AIM HIGH

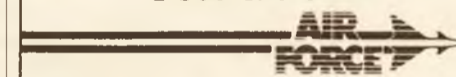
Optometrists
Pharmacists
Physician
Assistants

Plan a future that soars.

Take your science-related degree into the Air Force, and become an officer in the Biomedical Sciences Corps. You'll learn more, you'll grow faster—you'll work with other dedicated professionals in a quality environment where your contributions are needed.

In short, you'll gain more of everything that matters most to you. You and the Air Force. Launch now—call

**USAF HEALTH PROFESSIONS
TOLL FREE
1-800-423-USAF**



The Barry Buccaneer

A Publication of the English and Foreign Languages
Department of Barry University

Staff

Editor In Chief- Raymond J. Whitney III
Associate Editor/ Layout Artist- Mark Carlson
Photography Staff- Paula-Lynn Clark
Mike McDonald
Faculty Advisor- Joseph P. McCallus

Writers: Susan Boone, Rosaria Castell, Kenly Fenio,
Amy Flagg, Theresa Lauderdale, Amy Liptak,
Tanya Loyd, Terry-Ann Lynch, John Manzelli,
Anne Martinez, Nicole Seaberg, Teresa Sheppard,
Pat Soffer, and James Taylor

The Opinions expressed in this publication are solely those of the authors and do not reflect the opinions or policies of Barry University or the Barry Buccaneer.

Development Center Offers Variety of Services

Continued

credential service, part-time and full-time job listings, on campus interviews, and more.

Bowers stressed the placement file service and the computer assisted program. She explained that counselors help seniors to construct a resume that the center sends, along with additional information to related companies. "One student paid \$50 for a resume that didn't turn out half as well as the one she did herself with our guidance for free," Bower commented.

The Sigi system guides students who are unsure of a major or want to know what the job market is like in their field of interest. Pressing a couple of keys can clarify a student's major, state job market trends related to the major, and list requirements and/or further training required for a specific career. Besides career counseling, there is counseling for troubled students, with a stress on confidentiality.

A center which provides a wide range of invaluable services should be crammed with students every day, correct? Surprisingly not, because many students are not aware of what the Student Development Center provides, Bower explained. Students don't seem to notice the fliers in Thompson hall and the bulletin board that lists the facilities in the center. Freshman orientation includes education concerning Student development, and

recruiters such as the Peace Corps and the Bureau of the Census pop out each semester to inspire students to work for them. Career day (coming February 24) is a major push designed to expose students to different career options and to meet representatives from a variety of companies, including Eckerd Drugs, Jackson Memorial Hospital, and WSVN Channel 7.

"Many students find out about our services through word of mouth," said Ms. Bowers. But that kind of advertisement can put a limit on the amount of students who take advantage of our services.

Is it solely up to the Student Development Center to produce a body of career-oriented students? "Students have some responsibility," commented Ms. Bower. Response to the advertisements are sluggish compared to other universities. According to the director, students at Penn State sleep outside of their job service office and form snake long lines the next day. Barry students seem "laid back" in attitude and procrastinate regularly. This attitude is reflected in the amount of students who visit the Center or make counseling appointments.

After a major exposure, like freshman orientation, the flow of

STUDENT DEVELOPMENT
CENTER PRESENTS—
CAREER DAY
FEBRUARY 24. 3-4 P.M.

Career day provides an opportunity for students to gain valuable information about various careers and potential employers. Meet representatives from business and industry in an informal setting and discuss career opportunities within their organizations.

SENIORS...BRING RESUMES!

IN THE HEALTH & SPORTS CENTER

students into the Center is heavy, than slows to a trickle after a few weeks. Ms. Bower admitted that promotion needed a bigger boost, but the whole burden is not on the Center. Both the students and the Center need to interact to produce success.

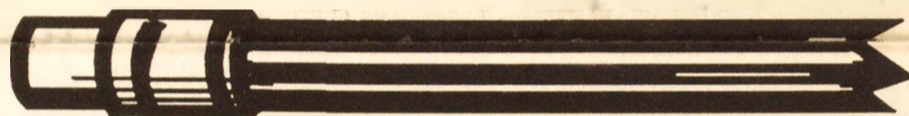
My experience with Student Development has been a positive and successful one. The companies I contacted are usually exclusively interested in Barry students, which almost eliminates competition and guarantees employment success. Part-time jobs are usually located close to school, and employers are sensitive

to student's schedules. Cruise America, a company that placed an ad in the part-time job book, is willing to hire students for \$6.50 an hour to work when schedules are free, and switch them to a full-time position come summer.

In light of the recession, the Student Development Center is a life line for job searchers. And the word is spreading. According to Ms. Bowers, more students are coming since the recession. As a student I can still get a job thanks to the free service at the Student Development Center.

by Teresa Sheppard

Once it's broken *it'll*



**Education
in
Florida**

**Tell your legislator
and Gov. Lawton Chiles
that you support
full funding of education
Send them a broken
pencil as a reminder!**

EdNA

**Support Education for
Florida's Tomorrow**



never be the same.



From the Editor...

by Raymond Whitney

"Party Smart."
"Drink Responsibly."

You've heard them—the public-service messages that appear between the beer ads on television. You've listened to them and laughed at them. You may have actually taken them seriously. But have you noticed something? They all deal with you.

The sponsors of the public service messages all seem to have one target—you. It's always you who needs to be responsible. For the most part that's true. We are supposed to be adults, and we are expected to be able to control ourselves. But what happens when it's someone else who is not in control? What are our responsibilities then?

"Friends don't let friends drive drunk."

That's the message we get. Just don't let your buddies get into the car and drive off into the sunset (or oblivion). It sounds so easy. It should be easy. It isn't.

How many times have you been drinking with your friends when someone decides they want, or need, to drive somewhere? Do you remember the rationalizations the person used to explain their ability to drive?

"I only had one drink...I'm fine."

"I've drunk more and still made it home."

"Who are you calling drunk? I had less to drink than you!"

When you are faced with the situation, how do you react? Do you confiscate the person's keys and call them a cab? Do you place them in the hands of a designated driver? Do you ignore them?

And what if the person is violent? Do you let the person fight you for the keys or give in? Even if (s)he is bigger than you?

There are a lot of questions but one simple answer, and you've heard it a thousand times. "Friends don't let friends drive drunk." Many of us see these ads and laugh. We're reminded of Nancy Reagan's clichéd "Just say 'No'" campaign and we don't take the message seriously. But we have to.

Nothing is uglier than a drunk person who has gone too far. Think about it. Sometimes the person experiences the random excretion of their bodily fluids. Sometimes the person laughs. Sometimes they cry. And sometimes they do both indiscriminately.

Frighteningly, a drunk can become abusive of others—even their best friends—making an already difficult situation worse. This is where people get hurt, both physically and emotionally. While the group may be out having a good time, one person can destroy an evening—and their friendships—by going too far.

Although it is a difficult situation, it is important to remember something. By definition, someone who is drunk is physically and mentally impaired—they are out of control. As a result, they need help.

If you are truly a friend, you must help—at whatever cost. The bonds of a true friendship are far stronger than the punch of a violent drunk, and they are far longer lasting, too.

You have to stick to your beliefs and stay strong. Despite what the person may say (they're drunk!) and how abusive they may be, you have to remember that you are helping them. It's for their own good. While taking the moral high ground may feel uncomfortable, it's the right thing to do. After all, if it was you who was out of control, wouldn't you rather be taken care of than let go?

So, the next time you're drinking at the Uke, Bandstand, Jaycees, or any random off-campus apartment, remember the saying that can save a friend's life.

"Friends don't let friends drive drunk" I won't.



The Report Card

by Mark Carlson

The alarm buzzes. I hit snooze twice and then drag myself out of bed an hour-and-a-half before my first class. I take care of my morning business, slurp down a cup of coffee, and leave the comfort and safety of my apartment to face my daring journey to school.

To seasoned commuters, my morning ritual doesn't sound like such a big deal.

It wouldn't be if I were like 99% of commuters at Barry and hopped into my expensive car and drove to school. But I have more class than that. I have the pleasure of being chauffeured to school every morning. The only problem is that I share my "limousine" with up to 66 perfect strangers.

That's right—I take the bus. Not just any bus—the safe, efficient and sanitary public transportation system of Metro-Dade.

God, I'm lucky! No, really, I am! Where else could I have had a grown man in a pink nightgown sit next to me and tell me Dan Quayle jokes? Where else could I argue with a bible-bashing wierdo who is convinced that the world's going to hell in a handbasket? How else could I catch a glimpse of a man jogging down 2nd Avenue with his hands down his pants? And that was just this week!

Most commuters are plagued with the inconveniences that come with driving: fiddling with your radio hoping to find a station that doesn't play Gloria Estafan, keeping your eyes on the road while dodging those pesky pedestrians, and making sure your hair looks O.K. despite the convertible top being down. On the bus these bothers are eliminated.

There's no need for a radio because there is ample entertainment on the bus for you to tune in to. Some of my favorites are when people start:

- singing the theme to *Love Boat* in a foreign tongue
- reciting the ABC's while burping (some kid got up to M)
- talking about their lewd sex life to anyone who will listen
- arguing out loud with themselves.

On the bus someone else is doing the driving, so you can let your eyes wander around your surroundings. Unfortunately the rest of the bus lets their eyes wander too. When I'm on the bus people's eyes seem to wander toward me. I can only guess that people are wondering how much cash I'm carrying.

I've learned that when people stare at me on the bus my best defense is to stare at someone else. This starts a chain of passengers staring at each other, and an unnerving trip for everyone.

If staring is not your thing there's

plenty to read in the bus—one of my favorite perks of a bus ride is the complementary literature provided. People always leave interesting reading material behind—and if you're lucky it's written in a language you can read. I've picked up some gems on the way to school such as

- the *Guns 'N Ammo* year-end blast-off issue.
- a nasty letter involving details about someone named Kamari, a motel room, a bottle of cold duck, and her escapades with half of the male population of her high school.
- a newspaper from 1988.
- a Barnett bank receipt showing a withdrawal of \$30 from a savings account and a remaining balance of more than \$24,000. (Why was this person taking the bus!?)

How, you may ask, can you sample the excitement of a bus ride?

It's easy.

Pick anywhere in the Metro-Dade area you want to go. Dial the Metro-bus information number (638-6700). Tell the operator where you are and where you want to go. They will tell you which bus to take, where the bus stops are located, and what times they arrive and depart. Then get ready for the ride of your life.

Some tips for your first time bus trip:

1. The cost of a one way ride is \$1.25 plus 25 cents if you need a transfer. Use exact change. Someone would be happy to take those big bills off your hands—so don't flash them around.

2. Don't ask the bus driver any questions. Bus drivers are inherently mean and hate all their passengers. If you try talk to them be ready for rejection.

3. Don't look like you're lost—even if you are. Know the route of your trip before you go. A lost college kid is a great target for large murderous thieves who just escaped from prison. Look confident!

4. Don't laugh out loud at people. Although the temptation to laugh will be irresistible when the man in front of you starts yelling at his Barbie doll, but laughing could hurt his feelings, and that's not very nice.

I hope these tips will be useful and that you're inspired to give the bus a try. Who knows...you may learn to enjoy the bus as much as I do. You may even abandon your car for public transportation.

Happy Traveling!

Letters to the Editor

Dear Editor:

At Barry University, as at any American college campus, there is a demand for around the clock security. The security should patrol the campus at all hours of the day and night. An unwatched campus can lead to unpreventable violence.

I conducted an informal survey on November 2, 1990, pertaining to the students' feelings towards the campus security. The feedback from these five students—Danielle Mitterando, Mike Dolan, Desiree Clarke, Don Pellitier, and James Ribiero—was mixed feelings. Mainly though, these five students felt safe during the day, but not at night. Two years later I followed up on this story, and found that there is still some improvement to be made with the Barry University security.

Many of the students that attend Barry University are commuters. I needed to find a student who lives on campus and is aware of the lack of security. I found a girl, whom we will call Michelle, living in the Mottram-Doss dormitory. I let her know exactly how I wanted this security investigation to run. I told her that I wanted to conduct a two week investigation into the Barry security at night. Michelle agreed, and was willing to cooperate with me every step of the way.

After interviewing Michelle, I found out that she has two night classes. Both were from six to nine, twice a week. I asked her to observe what was going on around her while exiting her nine o' clock classes. The only things that Michelle saw were some cars, and a few professors walking around the campus. In the two weeks that Michelle was investigating the security, she never saw a security guard patrolling the campus.

After my investigation of the "Absent Security Guard," I spoke to Michelle, and asked her what she thought. She replied, "Security guards should not only be patrolling the campus during the day. Besides, there really isn't anything to be afraid of in broad daylight. I would just like to see a guard or two patrolling the campus at night."

An unpatrolled campus is an open invitation for violence. Students walking alone to their cars at night are often used as bait for some sort of violent act.

Michelle, along with the other students I have come into contact with, would really like to see some changes made on this campus.

Continued on page 6

LETTERS GUIDE

The Barry Buccaneer welcomes letters to the editor from the community at large. Letters to the editor must be signed and must include the writer's address (or Barry box number) and a contact phone number. Letters should be submitted to Barry box number 1011 or delivered to the Buccaneer office (Thompson 203). The deadline for the next issue will be October 29.

Letters to the editor are printed with a minimum of editing; We routinely correct errors of fact, spelling, and punctuation. We do not publish poetry or open letters. The Barry Buccaneer reserves the right to reject any letters it feels are improper. All letters become property of the Barry Buccaneer.

Arms and the Man: Viewing the New World Order

George Bernard Shaw's classic satire on war and the professional fighting man, *Arms and the Man*, will be produced on the Barry campus this month. Shaw's play provides a nostalgic look back to a relatively minor military confrontation between two turns of the century political powers. The political confrontation involved in the play is that of 1885—a bygone world. Or, is it? Are we living in a different political situation than that of 1895?

World War II marked the disappearance of over 20 political and ethnic entities that once held great prominence on the world political stage. For over 50 years—roughly the period of

**Are we living in 1892
or 1992?
Only history can tell.**

the cold war—many pre-World War II political actors seemed to have disappeared from the political spectrum. Among these entities were Bulgaria, Serbia, and the Ukraine. Ethnic groups that many thought had dissolved into the Soviet Union, such as the Croatians, Georgians, and Latvians, have re-emerged and Eastern Europe has begun to look, sound, and feel like it did in the early 1900's.

This confronts the world's policy makers with some complex problems. With the Warsaw pact and the U.S.S.R., there was one policy made for the Eastern Europe. Now, with the re-emergence of ethnic and national identities, separate policies need to be drawn up to deal with the multitude of interests.

With the new identities, old rivalries have also re-appeared on the world scene. While centuries-old ethnic battles had been put on hold through the iron will of the Kremlin, they did not go away. Thus, with the loss of a centralized Soviet state, ancient ethnic battles were rejoined. Without a policeman controlling them, Eastern European entities began to flex long-dormant muscles with one another.

So, in 1992, groups that had been nothing more than curious historical fascinations—people of both myth and legend—arose. While many of us had come to accept Yugoslavia and the other Eastern Bloc countries as legitimate, unified states, we could not have imagined the internal unrest that was a constant undercurrent within Eastern Europe.

Arms and the Man has as its central theme a brief war. In 1885, Serbia and Bulgaria, two of the long-dormant political powers described, were fighting for reasons that are left unclear in the play. Significantly, these countries have made their entrance onto the political stage of the 1990's with violence following closely behind. Such an entrance inspires questions about the past and its relevance to the

world's future, and it makes us look differently at a play written in what we thought was a different world and a different time.

The Serbians were made part of the newly-formed Yugoslavia shortly after World War I. For over 75 years they disappeared from the world as a separate political entity. Now, they're back. The

**We are, in effect,
watching as history
repeats itself.**

Serbian dominated the world's news headlines a few months ago with their war against Croatia (another of the recently-emerged political powers of the 1990's). Does history have any lessons for the modern world to learn about Serbia?

Bulgaria, once a world power, was made a part of Russia after World War II. In time it became a politically dormant part of the Soviet Empire whose ethnic rivalries were stopped short by Soviet domination. With the dissolution of the U.S.S.R., Bulgaria's political and ethnic squabbles no longer could be kept dormant. The result? Presently, Bulgaria is arguing with Romania over the ownership of the province of Transylvania (yes, *that* Transylvania). This argument has been in

existence since the Balkan Wars...a century ago.

The ideas of patriotism and the picture of national rivalries that are seen throughout *Arms and the Man* offer a remarkably clear view of our present world stage. While we laugh at the triviality of the war in the play, and while we scoff at the characters' reasons for fighting, we must look at the present in terms of the past. We are, in effect, watching as history repeats itself.

How many of the once-dormant political rivalries will re-appear in the form of bloodshed? Has there not been enough fighting between the rival Yugoslavian republics? Are we destined to live in a world where Armenians and Azerbaijanis, Serbs and Croates, or any other ethnic group have to be kept apart by the army of (what is now) the Unified Republics, in a situation that looks like a teacher prying apart battling children?

Go see *Arms and the Man*. On one level it is a brilliant, farcical comedy. Yet, on another level the play is a topical drama that explores the re-emergence of the political map of the 1880's. However you may see it, bear in mind that the single motivating force that moves the characters to fight is a timeless one: patriotism. According to Shaw, patriotism as "the belief that one's nation is the best in the world, solely because you were born in it."

Have things changed at all? Are we living in the world of 1892 or 1992? Only history can tell.

by John Manzelli

Florida's Education Cuts: Not a Pretty Picture

The effects of the recession have left just about every Floridian asking, "Just what else could possibly go wrong?" Thousands are jobless. Thousands are homeless. Thousands more are on the brink of joining the ranks of the jobless and the homeless. Here comes another big blow. According to Governor Lawton Chiles, the state has a huge deficit and cutbacks must be made in some sectors in order to reduce it.

The sector to receive the largest cutbacks is education. So if you thought nothing else could go wrong, wake up and smell the coffee. The futures of Florida's youth are about to be trashed. The state has the money to properly educate them. Education is probably the most important service available to any state. It is the training of minds to be independent, to learn to earn, and achieve. Cutbacks in education would only have negative effects in the long and short term.

What do cutbacks in the budget for education mean? They mean that hundreds—if not thousands—of teachers will be laid off from public schools. The student/teacher ratio would grow. There would be fewer scholarships for students who want to go to college but cannot afford to. Many vital educational programs, like remedial writing skills, will be cut from the public school curriculum.

The Teaching Crisis

Come on lawmakers! Laying off teachers will only burden the state with more jobless claims. The higher student/teacher ratio will only put more pressure on teachers and students in the classroom. Students will receive little to no attention because teachers will not have the energy to attend to all the students. Slower students

will not receive the individual attention they need, and unruly students will go unpunished or even ignored. Learning will become difficult—if not impossible—in the classroom.

Teaching under the best conditions is a difficult job, but in the public schools it is also dangerous. Teachers have little defense against the hooligans that may end up in their classrooms since the law forbids teachers from clobbering students. Can you imagine the stress that the public school teachers will feel? Teachers will either burn-out or go stark, raving mad. I hope the state lawmakers are ready to foot the bills from all the psychologists and psychiatrists who will be needed in the future if education cuts take place.

Florida already bears the shame of having one of the lowest SAT averages in the nation. The proposed state budget cuts in education would remove vital programs in public schools, such as remedial reading and writing skills. These programs are among the most needed in today's world, and cutting these programs would only help the state dig itself deeper into its grave of ignorance. The results will be devastating. Imagine a Florida where people cannot even write their own names, let alone compose a decent paragraph.

Some may argue that a few illiterates manage to make it big. Yeah right! That's real comforting. You're highly successful but functionally illiterate. It would be great to find out that an article was published in the newspaper about you when you couldn't read. Imagine a work force and government of functionally illiterate Floridians. The way things look from this point of view, we might as well fold our arms and drop dead.

The College Crunch

State cuts will result in fewer Floridians having the opportunity to attend college, simply because they cannot afford to. Many grants and scholarships from state universities will be eliminated. A college education is required to enter most fields of occupation. This means that the poor will have little opportunity to improve their status. They may have to resort to low paying jobs, welfare, or even crime in order to survive—the latter burdening the state even more.

Should other states follow Florida's lead and cut their education budgets as well, what of America's future? Japan is already laughing at the U.S. labor force calling it lazy and undereducated. Can the United States stand up to the rest of the world's future mockery when the educational system will be worse than it is now?

Florida's Greatest Resource

Florida has few natural resources when compared to other states. We have an agricultural sector dominated by the citrus crop, and we have the sunshine that brings in the tourists. One significant, and often overlooked, resource this state has is its people. Florida is a multi-cultural society that could easily cash in on the growing service industry in the United States and the world; thus, Florida would be able to offer anyone in the world any service that they may need. However, this industry needs educated people. By cutting education, Florida would shortchange itself.

Answers to the Money Problems

One may ask "Where is the money to keep the educational system afloat going to come from?" Well, the money is there. It just isn't being distributed evenly. Where do all those middle-class taxpayers dollars and the lottery fund go? To programs that could stand to be cut. Programs that should be looked at before education. Suggestions? Try these...

Cut the welfare programs that keep the lazy and illiterate fed, and how about not keeping all those criminals on death row for so long? Taxpayers have the burden of paying their free long-term room and board before their death. Let the rich pay higher taxes and take the burden off the middle class. Forget the idea of distributing free condoms and birth control at public school students—this money could be spent on distributing books to educate them instead of teaching them how to have sex and live dangerously. After all, condoms break, and birth control can fail, but a good education can benefit.

Take a larger percentage of earnings from the lottery for the sake of education. After all, young people are the future. They will be our future leaders. What sort of future will Florida have if its young people don't have the qualifications to look after themselves, much less other people?

In closing I will re-emphasize the importance of education. If I cants goes to skool, I bees a fool! If my gramer are bad, thas be jus' saad. If i kant rite my name, than dats a big shaim. I are going to skool but i ain't learning the goldin rool.

My fervent hope is that lawmakers remember this saying before the slashing begins: "silver and gold will vanish away, but a good education will never decay."

by Terry-Ann Lynch

Communication Students Receive Hands-on Training

Students of the Department of Communication are finding themselves fortunate to have hands-on experience in what they consider Miami's finest and most modern television studio; and it's here at Barry!

"I think the David Brinkley Studio helps promote Barry's name and it's a real asset to our campus. I feel very fortunate to be a part of Barry's studio program," spoke senior broadcasting major Kathryn Rubert.

The studio has helped the Department of Communication become one of the most popular departments at Barry. Student Broadcasting General Manager William Lynch Smoak, a transfer student from Regis University in Denver, Colorado, explains: "I'm interested in broadcasting and this department is the reason for my being here. Barry has a new department with access to professional styles and techniques of hands-on experience as well as traditional book learning."

The Department of Communication

is ten years old. According to Sr. Marie Carol Hurley, O.P., Professor Emerita of Humanities, "It [the department] was established in 1982 when Sr. Jeanne O'Laughlin, President, hired Sr. Vivian Jennings who in turn employed the chairperson, Dr. Sheva Farcus, and professor Dr. Rod McVetta. They began by emphasizing broadcasting and set up the original studio in Thompson Hall..." Sr. Marie Carol continued, "I was chair of the theatre department for twenty years and was asked to join the Department of Communication in '83. We introduced a consortium to produce for cable T.V. where we produced *The News is Good*, *Witness for Peace*, and *Floridian Arts* along with several other programs... Since then we have moved to the Garner building with the new equipment."

The T.V. studio has grown from the small, \$30,000 studio in Thompson into the \$300,000 studio in the Garner building.

"We've come a long way from the tiny studio in Thompson Hall," commented Mary Rode Worley, production coordinator



The inner workings of the David Brinkley Studio, where Barry students get hands-on experience with the latest communication technology.

for the Department of Communication, "Barry's studio has state-of-the-art equipment that gives the student practical experience as well as theory with the practicum course working in the studio to produce their own shows in the Chroma—Key Club. This is great for their portfolios." And Worley should know. She started working at Barry in 1986 as a broadcasting

technician and has seen the growth of the department.

The David Brinkley Studio is a part of Barry's continuing move toward the future. By responding to the needs of the students and the community with on-campus technology, Barry assures its place as a growing force in South Florida.

by Theresa Lauderdale

Ambassador Club Aids Admissions

To some, the Ambassador Club is completely useless. The members are not active on campus and the club does nothing for Barry students. Mary Monroe, co-president of the Ambassador Club feels otherwise. She says that students just haven't paid attention and aren't aware of the work being done. Many Barry students don't even know that the Ambassador Club exists, much less what the club does.

As the name suggests, the members of the club act as student ambassadors for Barry. The main duty of the ambassadors is to assist the Admissions office in the recruitment of new students. The club accomplishes this goal by giving tours, writing letters, and phoning prospective students.

The ambassadors also participate in Barry's "Fabulous Fridays" and "Overnighter" programs. These programs give potential students a first-hand idea about campus life by allowing them to "room" for the weekend with a club member.

Monrose feels that both of these programs have a tremendous effect on the enrollment of new students. "It gives prospective students a great idea of what it's really like at Barry. They can relate to us better and ask questions that they wouldn't ask admissions counselors," Monrose said.

Aside from what the ambassadors contribute to Barry admissions efforts, they give a lot of themselves to the community in general. Last November they sponsored a food drive and donated ten boxes of food to the needy in Dade County. This month the club is volunteering their time by helping out at the Special Olympics.

The Ambassador Club has grown considerably since it began three years ago. This semester there are 56 active members. From looking at the size of the club and all of the events that they participate in, it's surprising that the Ambassadors aren't well known on campus.

Why is this? Monrose feels that the students aren't aware because the club is mostly involved with outreach responsibilities. "We help get the potential students to come to visit Barry, and students here don't actually see that," she said. The club is trying to improve the situation. "This semester we're trying to focus more on the social aspect among members and with other clubs," said Monrose.

The Ambassador Club gives students an opportunity to do something for Barry. So, the next time you see a teal polo shirt-clad student guiding families around campus, think of the Ambassador Club. After all, they may be guiding your future roommate right now!

by Susan Boone



Mary Monroe, co-president of the Ambassador's Club, making friends at the Ambassador Club Car Wash.



Sr. Marie Carol Hurley reflects on Barry's Department of Communication, which has grown from a tiny studio to a facility on the vanguard of technology.

Volunteer Center Opens to Help Community

It's a common Barry complaint: "There's nothing to do." Students often feel that Barry does not offer enough activities for them to take part in.

Now there is a place for students to go and keep active and help the community: the volunteer center. The volunteer center offers a service where students get information about places in the Miami area that need volunteers. The center is set to open in early spring. It will be headed by Tessie Alvarez, a senior at Barry. Ms. Alvarez will get help from Sr. Evie Sorto and freshman Jennifer Latchman.

Volunteering is nothing new to the Barry community. Barry students have donated their time at Camillus House, the Barry-St. Francis Center, and Gragny Elementary School.

Volunteers for the Camillus House—a local homeless shelter for men—help serve in the food lines every Tuesday. Barry students spend time at the Barry-St. Francis Center—located across the street from campus—joining the residents in social activities and helping them get around. Volunteers also help

children from the Gragny Elementary School with their reading and math skills. These Barry volunteers give the children the special attention they need to succeed.

Another volunteer possibility is being formed with the volunteer center. The program, Barry Buddies, is the University's own version of the "big brother big sister" program. This program matches Barry students one-on-one with kids. Field trips and campus activities are being planned for the children.

In February, Barry will be sending ten students to Orlando for a conference on volunteering. The students attending are a mixture of active volunteers and representatives from University clubs. At the conference these students will learn techniques to get students involved in volunteering.

Barry's program can look forward to creating a bright future in the Miami community. The key element will be Barry's most valuable resource—support from the student body.

by Amy Flagg

Letters to the Editor

Continued

REQUESTS:

- 1) Have security guards patrol the campus at night.
- 2) Have security patrol the parking lot.
- 3) Have security patrol all entrances to the university.
- 4) Have more lights around campus.

HELPFUL HINTS ON STAYING SAFE ON CAMPUS:

- 1) Always walk to and from classes with a partner.
- 2) Always lock your car and dorm door.

On the other side of this issue, the students are thankful for the *3 security service that is offered. This service allows you to pick up any university phone in case of an emergency. This service rings into the security office, and a guard will assist you in any way possible.

Sincerely,
Allissa Gross

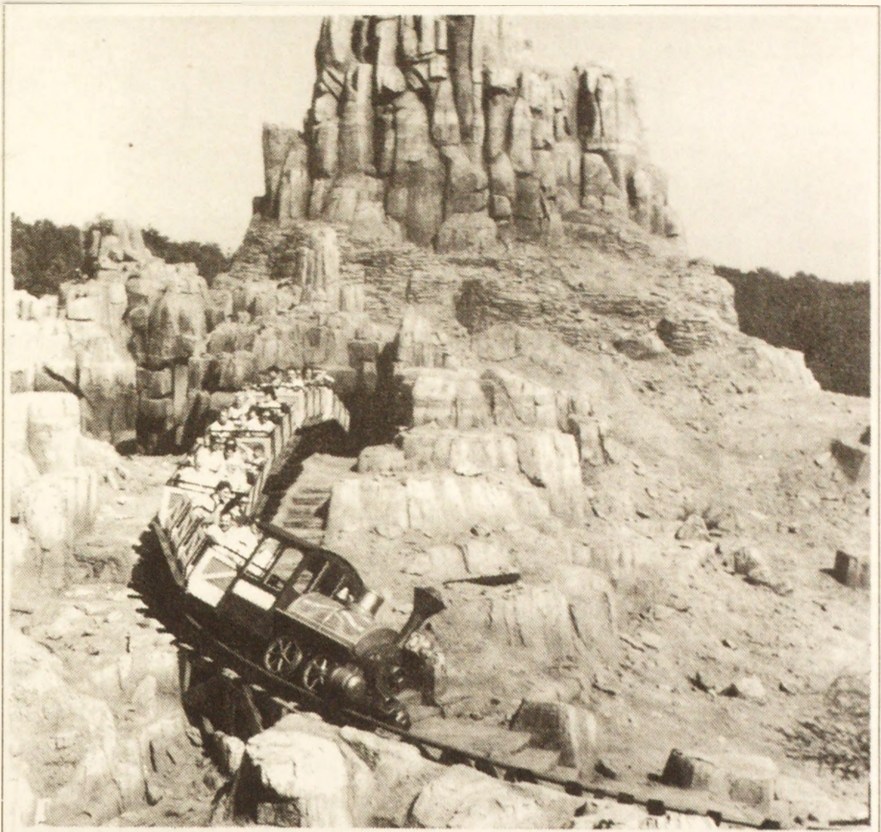
Dear Editor:

I am writing to you on behalf of the concerned students at the Barry/Miami-Dade Program. We, Barry students, although quite a distance away from campus, still feel part of the "Barry Experience." I am sure we hold the same pride as any student attending the main campus.

The purpose for my letter is to possibly have a section of the Buccaneer dedicated to this part of Barry (the Dade students). The faculty and administration have done all in their power to make us feel welcome and illustrate the definition of being a Barry student.

I understand this is just a rough idea that might take several semesters to materialize.

Sincerely,
Gladys Perez



Thunder Mountain Railway is just one of the great attractions waiting for you at Disney this spring.

Disney Lowers Prices for Spring Break

Barry students can blast off on "Star Tours," conquer "Space Mountain," and careen through the human bloodstream in "Body Wars" at special student prices from February 22 through April 10 at the Walt Disney World Resort.

With a valid student identification, college students can take a break from the beach and try a day's worth of thrills at Disney-MGM Studios Theme Park, the Magic Kingdom, or Epcot Center for \$22 plus tax. That's \$11 less than regular

admission. A souvenir button is free with each student ticket.

Students can grab even bigger savings with a two-day ticket for \$40 plus tax. The ticket provides admission to two parks of the student's choice on each of two days. This is a \$26 savings compared to the price of two one-day, one-park admissions.

All three theme parks have added attractions since last year. So don't miss out on the savings, and the fun, of Disney this Spring Break!

FAST FUNDRAISING PROGRAM

Fraternities, sororities, student clubs. Earn up to \$1000 in one week. Plus receive a \$1000 bonus yourself. And a FREE WATCH just for calling 1-800-932-0528 Ext. 65.

FAST FUNDRAISING PROGRAM

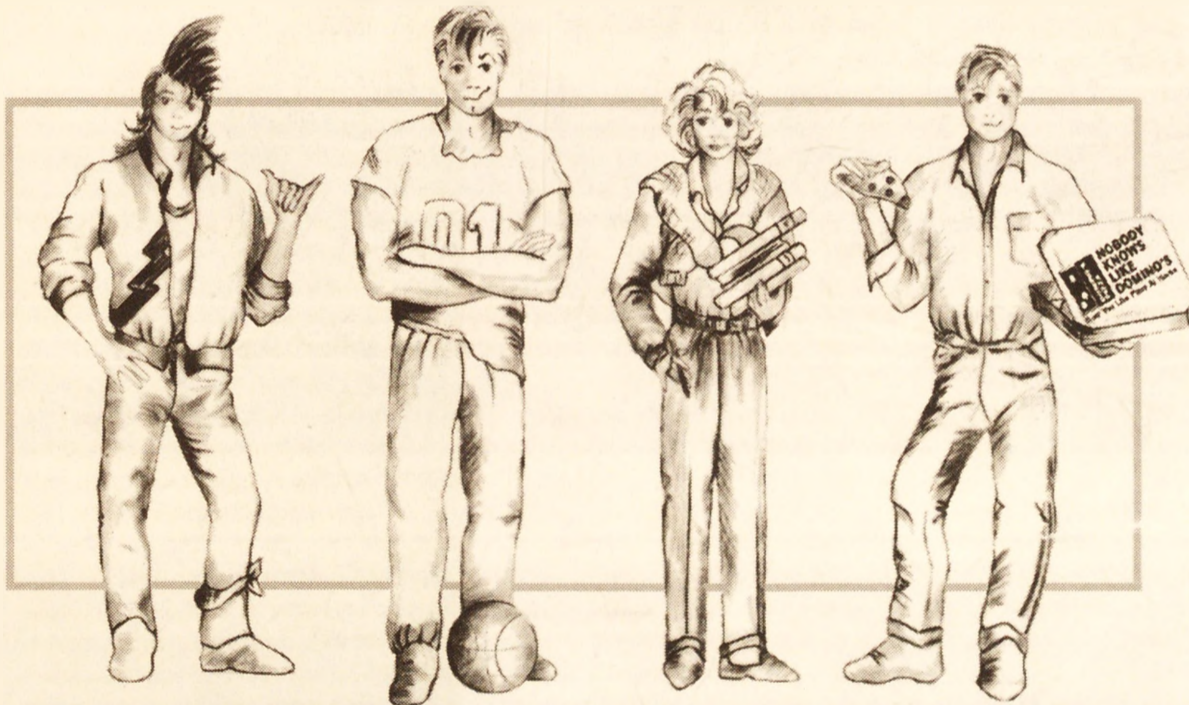
\$1000 IN JUST ONE WEEK.
For your fraternity, sorority, team or other organization.

Plus receive a \$1000 bonus for yourself!

And a FREE WATCH just for calling.

Call 1-800-932-0528 Ext. 65

WHICH IS THE EXPERIENCED COLLEGE STUDENT?



TAKE IT FROM THOSE WHO KNOW,
DOMINO'S IS THE WAY TO GO!



NOBODY KNOWS LIKE DOMINO'S

How You Like Pizza At Home.

CALL US! SERVING BARRY UNIVERSITY 899-0511

DINNER FOR 2

ROOMMATE PLEASER only \$6.99!

Medium Pizza with two toppings and two cans of Coca-Cola® classic or diet Coke®. Available in Pan or Original.



Tax not included. Valid at participating stores only. Not valid with any other offer. Delivery areas limited to ensure safe driving. Drivers carry less than \$20.00. © 1991 Domino's Pizza, Inc.



Coupon Necessary

Expires 2/28/92

MORE FOR LESS

LARGE PIZZA AT A MEDIUM PRICE!

Order your favorite Large pizza and pay the price of a Medium of equal value at regular menu price.



Tax not included. Valid at participating stores only. Not valid with any other offer. Delivery areas limited to ensure safe driving. Drivers carry less than \$20.00. © 1991 Domino's Pizza, Inc.



Coupon Necessary

Expires 2/28/92

SUPER SAVINGS

TWO LARGE PEPPERONI PIZZAS only \$13.99!



Tax not included. Valid at participating stores only. Not valid with any other offer. Delivery areas limited to ensure safe driving. Drivers carry less than \$20.00. © 1991 Domino's Pizza, Inc.



Coupon Necessary

Expires 2/28/92

Barry at the Bard

"It effectively changed my life: it made me serious about academics," said Ray Whitney.

"It was marvelous, glorious, a gem, with wonders at every turn!" said Estelle Smith, who, at age 72, calls herself "the oldest college girl in captivity."

Smith and Whitney are two of the



Walking back from the pub you can explore the many side-streets in and around Oxford.

many students who have participated in the Barry at Oxford Program, a cross-cultural educational experience that combines the taking of college accredited classes with the experience of living in a beautiful medieval university town rich in custom and history.

"Barry at the Bard" is in its fourth year; the 1992 summer session is scheduled to run from July 3 through July 24 at Oxford University at Oxford, England. According to Mrs. Smith, a 3-year veteran of cross-cultural

programs, "Oxford is a remarkable place. The music, the bookstores, the theatres...fascinating! It is a city that has retained its natural beauty. There were interesting people from all over the world. The comradie was particularly inspiring." Added Whitney, "After

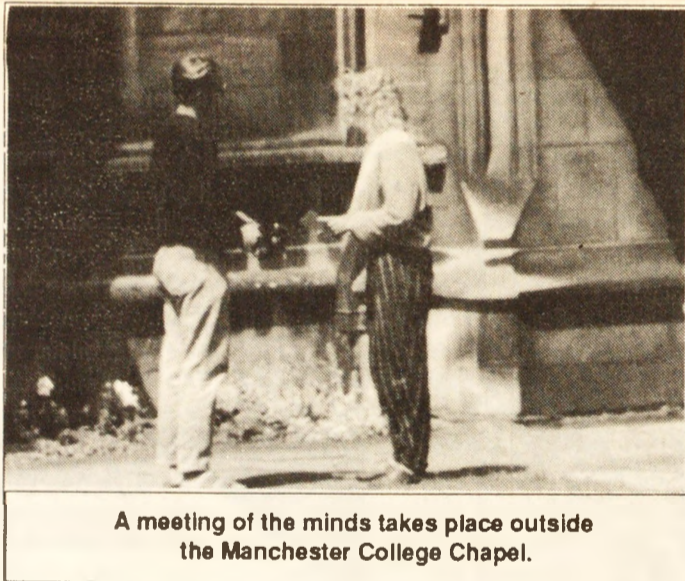
my experiences at Oxford, nothing else mattered but academics. The summer abroad afforded a tremendous opportunity to attend school and be able to explore the world and yourself at the same time."

Because the location of Oxford is centrally located between London and Stratford-upon-Avon, students are able to visit great museums and libraries, cities rich in both history and architectural splendor, internationally famous bookstores, the Royal Shakespeare Theatre, and the Royal National Theatre. Leisure time can be filled with hours of exploring, bicycling, long walks, water activities on the rivers, or lunching in one of the many quaint little pubs in the area.

During the session, classes will meet four weekday mornings each week. The disciplines are independent of each other and are conceived in the context of cross-cultural study, with a common core of experience to be shared by everyone. This academic program seeks to provide a balance between supervised study, cultural experience, and recreation.

Courses are being offered in English, communications, education, and psychology. All students of sophomore standing or above are eligible for the program.

For Estelle Smith the experience was "worth a billion dollars" and she



A meeting of the minds takes place outside the Manchester College Chapel.

is thinking about making the trip again this year. Said Smith, "England reveres the spoken and written word like no other culture in the world. This is truly an experience you will never forget!"

by Pat Soffer



No trip to England would be complete without a visit to London's historical sites—including Big Ben!

O X F O R D

BARRY AT

JULY 3 -
JULY 24

Art Exhibit Showcases International Works

El Arte De Las Madres de Peru "The Art of the Mothers of Peru" is a colorful exhibit of political art. This exhibit can be seen in the Barry Art Gallery, located in the library, during the month of February.

The exhibit features a type of artwork called arpilleras. Arpilleras are made out of fabric from the artists' clothes. The women who create this work come from Chile and Peru. They make these arpilleras and sell them to try to help provide for their families.

The artists have given these works many different themes, raising political issues such as human rights and women's rights. As the background information on the works and the artists explains, these works call for "justice, freedom, and equality for a return to the basic human rights to Chile."

According to art assistant Heidi Firpo, some of the works are not created by individuals, but by groups. The group Taller de Puertas Abiertas (Shop of Open Doors) created *Huelga de Mineros (Miner's Strike)*. This work contains political themes such as unemployment and the secret police. As Firpo explained, "this is an informal composition and it focuses on telling the true experiences and trials in their daily life. This can be seen in the fact that the people are protesting that there isn't any work."

Another work in which political themes can be seen is by Virginia Augui who is from the group Taller de Sagrada Corazon (The Shop of the Sacred Heart). The work is titled *The Right Not to be Illegally Detained*. Firpo pointed out that "In this textile the women are being arrested."

Commenting on the dangerous political nature of the works, Firpo said, "It's possible that these women who made this textile would be assassinated for making this art because it is a political statement against the secret police."

Similarly, another work from the same shop, in which political themes can be seen, is Aurelia Huamani's *Violence in the Pueblo*. This work depicts people being persecuted. This idea is portrayed by the image of bodies lying dead in the street. The implication is that the secret police is the cause of the violence.

More political themes can be seen in the work of Taller de Puertas Abiertas (Shop of Open Doors) which created *Huelga de SUTEP (Teacher's Strike)*. This

work shows the personal effects of political violence. Firpo explained, "The teachers are going on strike because they are being abused physically and mentally."

Yet another political theme is evident in the work of Irene Rojas from the group Taller de Mujeres Creativas (Shop of Creative Women). The work, *Mercado (Shortages at the Market)* shows the consequence of political turmoil. As Firpo said, "This work depicts the terrible food shortages in Peru."

Leonara Quisepe of the group Taller de Sagrada Corazon (Shop of the Sacred Heart) deals with political themes in her work, *The Right to Live in Our Community*. Firpo's interpretation of this textile is that "the government does not allow the people to go further than where they live and the people want to roam around."

According to Firpo, the same idea can be seen in Bertha Pino's work, also from the Shop of the Sacred Heart. This piece is called *The Right to Travel Through the National Territory*. This work criticizes the fact that "they are not allowed to leave their city, or town, and they want the right to be able to go to rural areas, or other parts of the country," Firpo explained.

Many women's issues are also raised by the works. An example of this is a piece entitled *Maternity Hospital* by José Rodríguez from the group Taller de Mujeres Creativas (Shop of Creative Women). This Peruvian textile portrays a pregnant woman dreaming that she is in a hospital. The issue here is that many of these women would prefer the security of a hospital in the event of complications during childbirth, but they are unable to go to one. The women made this textile because they want government reforms in these areas.

Another one of the works, Carpio's *No Golpeare Mas (No More Beatings)* addresses the issue of domestic violence. This piece shows a man hitting a woman, who runs to other women for help. In the end, the three women have the man tied up.

After seeing this art exhibit and Firpo explaining what the textile works convey, I felt I had experienced a culture that was different from my own. This exhibit showed me the political and social lifestyles of the Peruvian and Chilean people by portraying in detail the issues that matter the most to them. I also was given a glimpse of the simple joys of everyday life in Chile and Peru.

by Tanya Loyd

Lunchtime Theatre Serves Laughs—For Free

Picture this: it's a regular Monday around noon and you are meandering through Thompson Hall desperately wishing for something exciting to happen before your next class of the day. As you wonder what foreign substance the cafeteria will be calling lunch today, you suddenly hear laughter coming from the south end of Thompson. Curiosity taking over, you stroll toward the nearby noise in the Houndstooth, eventually laying eyes upon two men with plastic bags over their heads jumping around a stage. What's going on? These people have decided to kill themselves...just to make you laugh!

Welcome to Lunchtime Theatre.

The above scenario is a specific example found in one of these creative productions. Each new Lunchtime Theatre production is a short, one-act play that strives to be bawdy, playful, and fun to watch. Lunchtime Theatre was created by the Barry University Theatre Department in an attempt to bring theatre to a wider audience. No longer must you go out of your way to experience cultural performances, now they are coming to you. And they are coming at full speed!

Stephen S. Neal, Assistant Professor of Theatre and founder of Lunchtime Theatre, deftly asserts that they are presenting Lunchtime Theatre for several reasons. "It started in my head from my undergraduate school. It gave me freedom to express myself. In the Top 10 Committee meeting, we wanted to find ways to increase student involvement. Top 10 being [the group of people that discuss] what we can do to make Barry one of the top 10 schools in the nation. We want to have a whole arts season with speakers and musicians. We want to increase awareness on campus that we have an active, vibrant theatre program; Lunchtime Theatre has to be loud, raucous, and accessible to students on an emotional level." So far, this has been accomplished.

The program involves not only students of the theatre directing course, but anyone else who ventures to perform in one of the productions. Actors are chosen through auditions by the director of the one-act play. Each student in the directing class is given the opportunity to produce

and direct his or her own chosen play. (S)he is to find a short comedy that can be performed in 30 minutes or less; have it approved by the student committee of the Theatre Club; go through the often grueling rehearsal process; hire student designers for the lights, sound, and set; and, finally, put the play on in the Houndstooth. The whole process takes approximately three weeks, and the show runs for three days.

Ted Belloise, a junior theatre major, directed the first production. He chose a play entitled *Godspies*, by Don Nigro. The script takes a lighthearted look at a religious talk show host and her warped, anti-Satan guests. Belloise recalls of the experience, "I learned that you can still have theatrical moments in a non-theatrical environment. You need to let your imagination go and solve the problems and logistics dealing with the environment. In a theatre, you have set parameters, but in the Houndstooth, you have the choice to put the stage anywhere."

The idea for this type of approachable theatre took some time to get off the ground, and when it finally did it was still somewhat shaky. It is now, however, quickly becoming a force as an alternative to expensive entertainment in the area. The last production was entitled *Welcome to the Moon*, by John Patrick Shanley. Shanley also wrote the screenplay for the film *Joe Versus the Volcano*.

Kathi Novelli, a theatre major also in her junior year, directed *Welcome to the Moon*. While rehearsing, she found that she continually asked herself, "How do I keep the truth there?"

"I needed to find ways to almost trick the actors into being funny without knowing they're funny, in order to keep the humor fresh. Directing, in general, enhances every aspect of knowledge in the theatre. You

are not responsible for only one part—you are the eye for every actor. With Lunchtime Theatre, it's valuable to direct and act because you have to deal on different levels; it's a good experimentation to find out what works and what doesn't."

One word of caution: Lunchtime Theatre is not for the easily insulted. The plays often have strong adult language and deal with controversial issues that are not always so easily welcomed at other Catholic

decided to stay with comedy. Thought provoking drama, however, is not out of the question. Neal declares, "At this point, until we find out how the audience is going to shape itself, we'll stick to comedy because it will override any external noise, whereas drama needs concentration that doesn't exist over there. Until all of Thompson becomes quiet, we'll stick to rowdy plays because it's a rowdy place."

Lunchtime Theatre is offered every



Part of the cast from the Lunchtime Theatre production of John Patrick Shanley's *Walking on the Moon* hams it up for the camera.

universities. The ultimate goal, according to Neal, is "...to provide a vehicle for them [the performers] to get feedback. This is not a polite audience; they can come and go as they please. The actors need to work harder to get the audience to stay. This way, when they are in a controlled setting, it's easier to please the audiences. Any student can take part in it; it's open to the whole campus. I'd love for 400-500 people to take part. I'd like to have a new show every week. There are a lot of exciting plays out there that don't get done anywhere else!"

For now, Lunchtime Theatre has

few weeks, and it usually runs for three days. You don't have to reserve seats. You don't have to pay a cent. You don't have to go far to find relaxation and laughter. And you just might see someone you know up on the stage.

For more information about upcoming shows, call 899-3420. Shows start at 12:30, and run no longer than one half hour.

Neal defines Lunchtime Theatre best when he says: "It's a terrific forum to get people talking about current events, each other, and how life works."

Sure beats lunch in the cafeteria.

by Kenly Fenio

The Meeting

February 26, 27, 28 at noon in the Pelican Theatre
\$5 for the public and \$3 for students and senior citizens.

February 27, 28, 29 at 8:00 pm and Sunday March 1 at 7:00
\$6 for the public and \$3 for students and senior citizens.

For reservations and information, please call 899-3420.

The Meeting to Highlight Black History Month

Malcolm X and Dr. Martin Luther King Jr. will be portrayed in the compelling play, *The Meeting*, at Barry University's Pelican Theatre during Black History Month.

Equity actors Allen Lewis, as Malcolm X, and Paul Bodice, as Dr. Martin Luther King Jr., hold an imaginary meeting. Differing in their philosophies but alike in their mutual respect, the two black leaders debate their varying approaches to the same grave social problems. Both men are

prepared to die for their beliefs. However, neither is aware of how soon he will be cut down by an assassin's bullet. The play was written by Jeff Stetson.

Student director Ted Belloise is producing the play as a Lunchtime Theatre event in the Pelican Theatre. According to Belloise, "We wanted to do something that would involve the community. By marrying Lunchtime theatre to Black History Month, I think we've done it!"

Carbonell Winner Designs Set for *Arms and the Man*

On February 21, 1992, Barry University's Broad Center for the Performing Arts will come alive to the Barry Theatre's production of George Bernard Shaw's classic, *Arms and the Man*. The idea of this production was the brainchild of the late Pat Minnaugh, and it will be brought to fruition through the magic of adjunct professor David Trimble's creative sets.

Trimble is a two-time Carbonell Award winner in the category of set design. The Carbonell Award, a regional version of the Tony Award, is the most prestigious award for theatre in the state of Florida. Trimble won his first Carbonell for *The Glass Menagerie* while working at the Coconut Grove Playhouse, and his second victory came while designing sets for the Minorca Playhouse production of *Sleuth*.

Arms and the Man presents Trimble with a rare opportunity in set design.

The script calls for three complete, different sets. The complexity and expense of such a production prevents most playhouses from attempting this play. But Barry audiences are lucky. Not only do they get to see a rarely-performed classic, but they get to see a master designer's work.

Trimble's sets depicting Shaw's Balkan Baroque style exhibits what Trimble likes to call "tacky Bulgarian splendor." The first set, the blue and silver bedroom of the heroine Raina, is completely overdone in keeping with the gaudy theme of the set. The second set depicts a slightly decrepit mansion, and the third set is a library.

Trimble has been working with five students to produce the set—a set that combines the best of Miami's local theatre talent, with Barry University's most ambitious theatre efforts.

by Pat Soffer

Barry Makes Mark in Metro Dade Marathon

January 5th, 1992 was one of the coldest days in Miami. But that didn't stop over a thousand people from gathering at dawn to participate in the Metro Dade Marathon (formally the Orange Bowl marathon).

The Metro-Dade marathon, organized by the Miami Runners Club, included three different races: the 5K (3.1 miles); the half marathon (13.1 miles); and the marathon (26.2 miles).

You may be asking yourself: "What's so great about this event?" Besides being one the largest races in South Florida, some members of the Barry community participated in each of the events. These brave souls were not just the cross-country team, they were faculty, staff, and students. Among the Barry participants were Dr. Lawrence Byrne, Assistant Professor of English and Dana Bardwell, Director of International Admissions. Representing the students were freshman Jessica Mora, junior Diane Daley, and me, (Anne Martinez, junior).

The 5-K

The 5K race began at 6:45 am with over 300 people racing. It was a three mile loop inside Tropical Park. According to Dr. Byrne, the route had several turns and the beginning

was a bit narrow. "It was a good day for running," said Dr. Byrne...and it was. With a finishing time of 19:58, Dr. Byrne finished second in his age category. Dr. Byrne's training consists of running 5 to 6 miles daily. Although he maintained that it can be difficult to train with the hours he spends at school, he said that if he leaves school early, he runs 7 to 8 miles.

Another 5 K competitor was Jessica Mora. Jessica plays for the women's soccer team. Although she does plenty of running, she sees that racing is different. "It's a feeling of accomplishment. Running requires plenty of self-discipline because it's personal. If you have a bad game or you lose, you feel bad. With running, crossing the finish line is enough to make you feel good," commented Jessica. I asked her if she'd do it again. "Definitely," she replied. "This is my third race and I'm pleased with it." Jessica finished 5th in her age group with a time of 24:23.

Half-Marathon

The 13.1 mile race began at 6:25 a.m. I, like everyone else, was jogging around trying to keep warm while stretching out before the long race. I was excited about competing in a half-marathon and I was happy to know that Diane Dailey was there to

experience it with me. Diane had an excellent race as evidenced by her time of 1:33:18. This time placed her second in her age group and eleventh overall in the women's division.

Diane said after the race, "I felt great and I feel that there are three factors that made me feel so good. First, the weather was cool, perfect for running; second, the enthusiastic atmosphere—everyone was pumped; third, the training I had."

I asked her how she kept her concentration. "Well, I thought about the race, and I already knew the course from running it the year before, and I knew where I was going to feel fatigued—at the eight mile mark. At the eight mile mark, I knew it was either make it or break it. When I looked at my watch, I knew I was going to make it and make it good." Diane is planning on training for next year's marathon.

Now I'll pat myself on the back. I ran



Among the Barry representatives at the Metro Dade Marathon, Anne Martinez works her way to a third place finish.

1:49:56 and placed third in my age group. I felt very fatigued at the tenth mile, but once I hit the eleventh I knew it was just two more miles and I would be done. That was one of the happiest experiences I've ever felt running.

The Marathon

And now the biggest event, 26.2 miles! You may wonder who would want to participate in this event but nearly 400 people did. One of those people was Barry's own Dana Bardwell. Dana Bardwell finished in an overall time of 3:37:58. The marathon began at 6:00 a.m. outside of Tropical Park, and it went alongside residential areas in Kendall. It past Hammocks Park, Miami-Dade Community College and Metro Zoo (the race turning point). During the post-race festivities, Dana said, "he felt good, though a bit tired when it was over." He also said the route was very boring, but, lucky for him, the spectators helped him finish.

These events were enjoyable for all of the participants involved: the runners and spectators alike. Running is great competition with yourself "to be all you can be." Congratulations to all who ran and good luck in future races!

by Anne Martinez

WE'RE THE #1 HOPE FOR THE #3 KILLER: LUNG DISEASE

The number one hope for the number three killer is the American Lung Association.

With your support, we can fight back.

It's a matter of life and breath.®

AMERICAN  LUNG ASSOCIATION®
The Christmas Seal People®

Space contributed by the publisher as a public service.

Intramural Results

Softball

	Won	Lost
Aliens	0	2
Footlongs	2	0
Homies	3	0
Leftovers	0	2
Looney Tunes	0	3
Merlin's Lounge	1	2
Phi Kappa Tau	3	0

Basketball

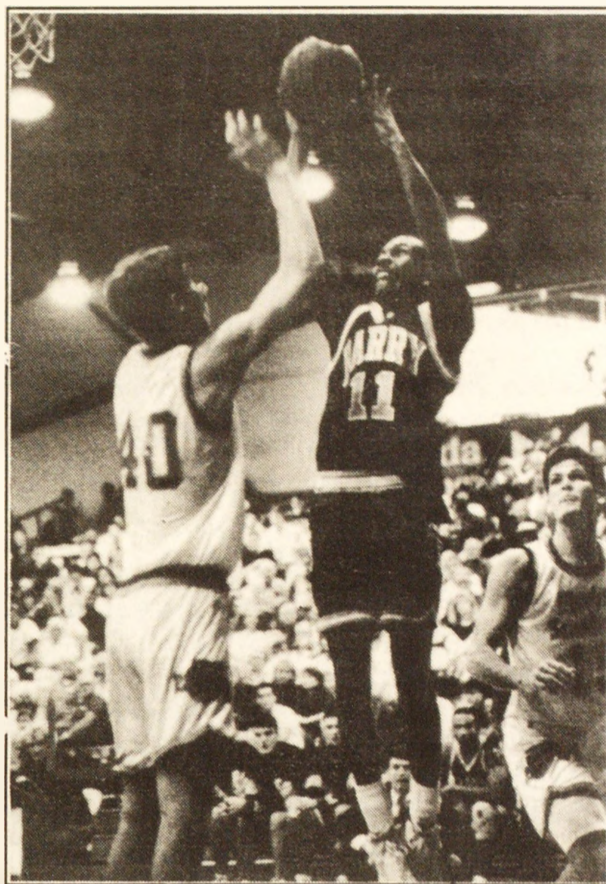
	Won	Lost
Alumni	2	1
Bomb Squad	2	1
Co. Jones Breakers	0	3
Homies	3	0
Merlin's Lounge	0	3
No Respect	2	1
O'fers	2	1
Podiatry	1	2
Rigor Mortis	1	2
The Flying Bunions	1	2
The Wanna-Be's	1	2
Tropics	3	0

Buccaneer Basketball Round-up

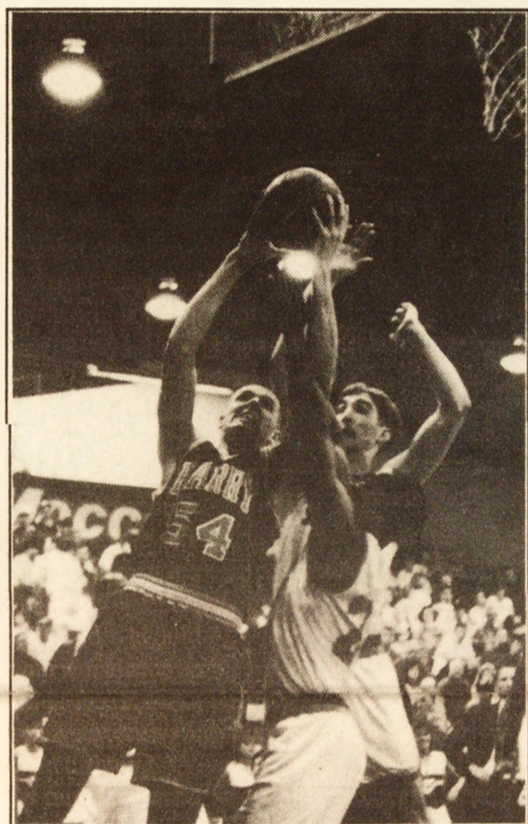
It's 1992 and the start of a new year, a time when most people are usually out partying and having a good time. People always seem to find a reason to celebrate during the new year, but that hasn't been the case for Head Coach Billy Mims and his Buccaneer basketball team. Coach Mims has been putting the celebration on hold until his team can find a way to break out of their recent six-game losing streak. The Bucs are 1-6 since bringing in the new year, and as they approach the middle of a grueling conference schedule things could ultimately get worse. Coach Mims says, "We may be down now, but don't count us out yet," as he tries to

but the Buccaneers let this one slip away as the Hatters squeaked out with a three-point win, 82-79. Junior forward Anthel Hicks led Barry with 19 points while Bobby Latham poured in 18 and grabbed 16 rebounds. Some controversy came into play in this road loss. With Barry trailing 82-77 with 25 seconds remaining, the Bucs came down and cut the margin to 82-79 on a Latham tip-in. The clock showed 11 seconds—confirmed by the official Stetson play-by-play—but the Hatters never inbounded the ball and officials did not rule that a 5-second violation occurred. This loss definitely left the Bucs with a bad taste in their mouth.

S.C. to meet Division I foe The Citadel. Needless to say both games ended in defeat. At Florida Southern, Barry raced out to a 37-29 halftime lead behind 12 of Michael Anderson's game-high 20 points. But the Moccasins came back with a vengeance in the second half and shot a blistering 69.6% from the field, while the Bucs struggled connecting on just 38.2% of their shots. "They couldn't miss. Everything they put up went in," said senior guard Cliff Acord about the Moccasins' second half shooting. Again, it was the never-ending story of poor foul shooting that led to the Bucs' demise. They only connected on one of 9 free throws in the second half. Coach Mims put it well when he said, "We're never going to win if we continue to shoot this bad from the foul line."



Michael Anderson, Barry's all-time career assist leader, shoots for two.



Brad Scott fights for the lay-up against Florida Southern. Scott is the Buccaneers' career leader in games played, and he needs only ten more rebounds to become the Barry career leader in that category.

T.V Inspiration

After suffering two defeats in a row, Coach Mims' squad had something to prove to themselves as well as the rest of the state. What better way to break out of a slump than in front of the home crowd on state-wide television?

The Bucs' next game was their Sunshine State Conference opener against the University of Tampa. It was televised live by the Sunshine Network from the Health and Sport Center. This game was the perfect opportunity for the Buccaneers to showcase their talent and break out of their slump. Well, they got half of it right.

The Buccaneers gave the Sunshine Network an exciting game, but they were unable to come away with the victory. The Spartans of Tampa, then ranked fifth nationally (in Division II), proved to be a little too much for the Bucs as they outlasted a late Barry comeback to grab a 72-66 decision. Senior guard Michael Anderson led the Barry attack with 20 points, while Anthel

Hicks added 17. "Poor foul shooting and the fact that some of our key players got into foul trouble really hurt us. If we hit out free throws it's a whole new ball game," said a dejected Coach Mims after the game. Things didn't seem to be getting any easier for the Bucs as they took to the road for their next two games. The first was in Lakeland to face conference rival Florida Southern, and then on to Charleston

rebound his troops from some very disappointing losses.

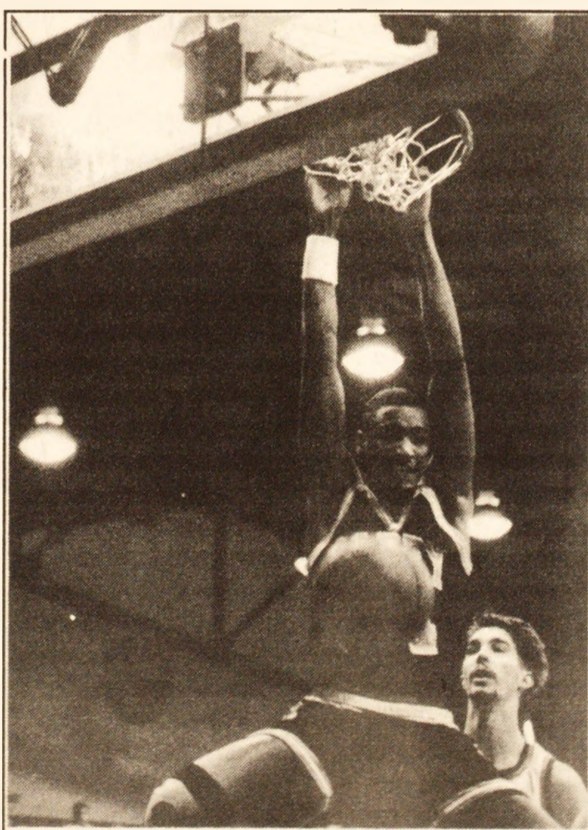
'92 Season Recap

The Bucs opened up strongly on January 3 with an impressive 88-55 victory over visiting Pitt-Johnstown in the opening round of the 2nd Annual Barry New Year's Classic. A 21-3 run in the opening minutes allowed Barry to never look back as they cruised on for an easy win. Sophomore forward Bobby Latham led the Bucs with a game-high 20 points while grabbing 14 rebounds. Barry was able to celebrate for the time being, as the win propelled the team into the championship game against a powerful Washburn (KS) club. But little did they know, the celebration wouldn't last for long.

The Bucs settled for second place in the tournament, as they dropped a devastating 89-68 decision to the hot-shooting Ichabods, who are ranked number one in the nation for Division II. Allowing Washburn countless second shots and committing 24 turnovers led Barry to their worst defeat of the season.

The Bucs had a chance to redeem themselves in Deland, FL, with a win against Division I opponent Stetson,

Charleston



Bobby Latham, last year's Sunshine State Conference Co-rookie of the Year, slams one home for the Buccaneers. This season, Latham leads the SSC in rebounding and blocked shots.

game-high twenty-six points and 6 rebounds.

Foul Shot Failure

Barry's losing streak was extended to six games on January 25 with a 70-57 home loss to conference-leading Rollins College. Once again the Bucs were in a position to win, but poor free-throw shooting (3 for 11) and a 16-7 run by the Tars in the final minutes doomed any upset hopes. The Bucs were led by Anthel Hicks who posted a team-high 26 points.

The one thing that has remained constant during this six-game slide has been the Bucs inability to make their foul shots. Poor free-throw shooting has victimized Barry in all of their losses. During the past six games, the Bucs shot just 61% from the foul line and at times they have made less than 50% of their charity tosses. The Bucs went 3 for 11 versus Rollins, 4 for 13 against Florida Southern, and 8 for 17 against Tampa. If this poor foul shooting continues, 1992 is going to be a very long year for the Buccaneers.

Last but not least, I would like to point out one of the few bright spots for the Bucs over the past six games. His name is Bobby Latham. A 6'7" sophomore from Goldsboro N.C., Latham is a superb athlete with excellent quickness around the hoop. This quickness allows him to get to a rebound before his opponent, and it also assists him in his shot-blocking ability. Latham currently leads the Sunshine State Conference in both categories. He is averaging 10.2 rebounds a game and 1.3 blocked shots, both tops in the conference. Latham is an up-and-coming star in the Sunshine State Conference who can ignite his teammates with a monster rejection that ends up in the bleachers, or turn on a crowd with one of his rim-rattling dunks. He is an exciting player to watch and has been improving with every game. I think by the time he is done here at Barry he will have given Coach Mims more than enough reason to celebrate.

by James Taylor

Personal Ads

Seaweed and salt this weekend how about it?	Baby I'll cut your toenails any time! Hair	Dimple, You are the most gorgeous and sexy girl on this campus. You are so beautiful! We love your looks baby! Boys of Barry.	Wow, Bat Man, are those <i>real</i> ?
P I can't think Q	I could do this all day—Not!	N. Welcome back! Feb 14 was the most incredible day of my life. I'm still in shock! M.	Sparky, Purge me, Work me, Make me sweat. Jose
"I love you Mike, but you have weak linear heritage."	Looney Tunes, Guess what? You still don't get it! You only have a few more months... ED	Pump up the Jagermeister! Lets pretend I'm a French airline steward, and you're a Greek Goddess. This weekend should be fun!	Rose, How blind are you? I have professed my love countless amounts of times and each time I'm ignored. Peter.
Dave, You make me want to be moral. Pookey	Dear Triple One, Andreas 111 (or Andreas Triple One, as you call it) will always remain in my memory. I still love you, no matter what I said. Whenever you are ready to forgive me, tell me. Love "Miss" P.T.O.	B-B-Q Buddies, May your burger fall to the moist earth and land in doo doo. Stop melting my spatula! Grill master.	Dr. Bob, Stop smoking.
Jim Your cleaning powers are fit for worship. Carpet man.	Big Daddy, Am I your worst enemy or is it a "black thing"? Just remember the Oompa-Oompa people and what happens to bad little boys. White-y	I don't care any more. I hate you.	Idiots at the basketball game, Next time I get to throw popcorn on your head. Red.
Sister Slave The love Doctor awaits Mr. Big	To every guy's dream, Dimple: You are one of the most beautiful girls we have ever laid eyes on! How can one girl be so gorgeous? That smile and those eyes are killers! What a very, very lucky man your boyfriend/husband will be! Weber guys.	Arrgh!	Salad eater, My tomato is ripe, and blue cheese is sticky. Lets do lunch. Junkfood.
BoBo says: What's the difference between a Chinese midget and thirteen purist supermen wrapped in toilet roll? Beats me	Lisa- Had an excellent time at ABS on Thursday—Let's do it again! Kent	ALL ABOUT PERSONAL ADS	
WORD 2 yer mamma	Kathy M. Thanks for all the help & inspiration!! K. Rusty.	<ol style="list-style-type: none"> 1. Think of something to say. 2. Write it down. 3. Count how many sentences there are in your message. 4. Understand it costs 25 cents per sentence to place a personal. 5. Send message and money to the <i>Barry Buccaneer</i>, box 1129. 6. Wait until the <i>Buccaneer</i> comes out. 7. Read and laugh. 	
Stan, Wrap your mellon. love, shower curtain	Desert Stormers: Are you having fun yet?	Two big breasts (poultry) and a large slab of hot beef are the best way to start off any weekend. See ya around the campfire.	Ray We love your perky smile and soothing voice. Your calm makes us woozy. May your blood pressure lower, and mind be at ease at the end of the week. Staff
Demetri, Thanks for being my buddy. Bruce.	Suzie— he must have found the only shallow bit.	Your flashy tie makes me hot. Slap me some love, honey lamb. Cartoon Man	N. Thank you for being patient.
McDonald, It's time for you to experience our Greekness. We wanted you the second we saw your back pimples. We can't go into details about what we plan to do to you but it involves a prominent local theologian, several live kittens and a stick of dynamite. Hugs and kisses the Roman Gladiators.	Cheryl, Who's biting the back of your knees?	Dear Lamma woman, I need to tatoon your forehead again! Last month was too much! Wow! What a woman!	J- I LOVE-U!!!!!!!!!!!!!!!!!!!!!!!!!!!!!!!!!!!!
D Your carpet is a lawn. Stay away from the comet. May your shoes become infested with gerbil hair.	What do you call a man who chases pufferfish with 30 bunnies up his bum? Love N.	Jones, I love your bones. fatty.	Dear Students, I the undersign, would like to develop a pen-pal relationship between students of Barry University and myself. Students who wish to write me should be serious about a long lasting relationship with "possibilities." All letters will be answered and persons writing should be: between the ages of 14 -22, and while all letters will be answered, I would prefer the majority of the writing be females. I am a 19 year old Jamaican attending a high school, studying accounting and Economics. My hobbies include: lawn tennis, writing, talking and going to the movies ect. More information will be had when you write, Which I do hope will be soon. Sincerely yours, Micheal Gibbs 18 Green Vale Rd. Kingston 10
L Pucker up the dirty duck Sincerely, mittens.	Suzie, How's Ole Yeller?!	High one, Didn't you have a moustache once?	
Dear shark tooth, Smoking is the main cause of lung disease... sniff glue instead. Light switch	Dayle, Good luck with your A's! M&N	Y!? why do girls fall in love? Mad	
Ed. I've had better issues. Lay.	J.C. Italians and actresses don't mix! Sister.	I just got out of jail, and I'm looking for a Jewish lover. Call me. Daisy.	
		My dog has a stomach tumor the size of a squash. Pray for him.	